

SNELLERS

ESTATE AGENTS



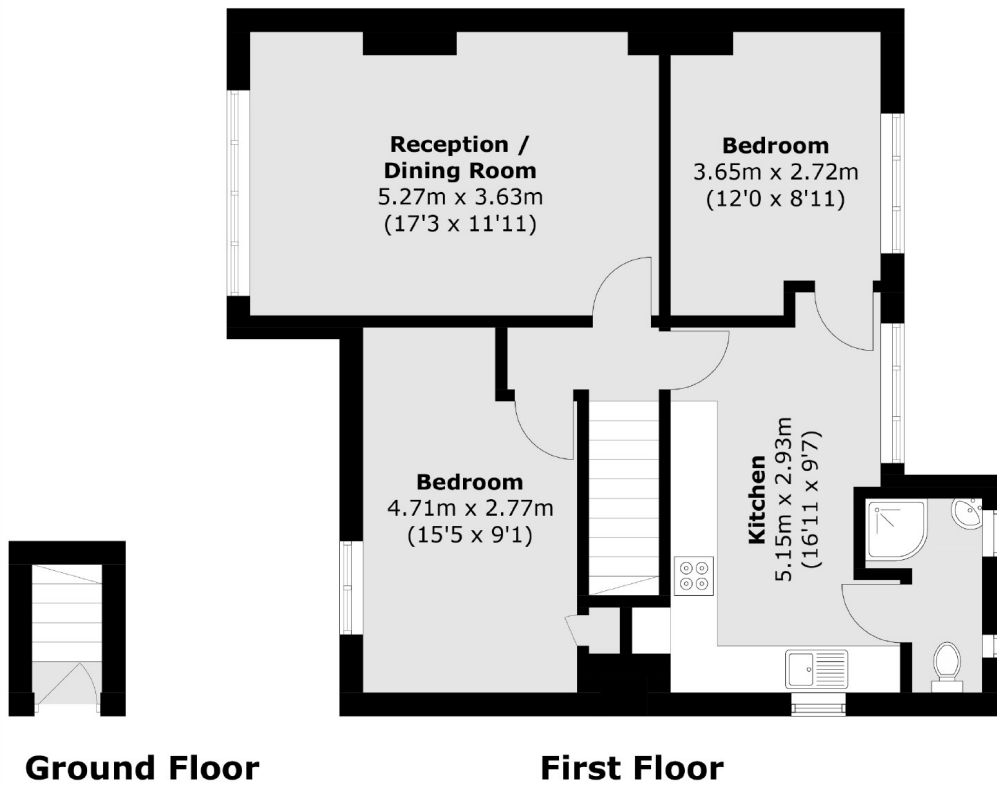
Prospect Crescent, TW2

£450,000

This two double bedroom first floor garden flat is offered to the market with a modern kitchen, good sized reception/dining room and a newly renovated bathroom. Further benefits to the property include double glazed windows, gas central heating and a large private rear garden.

Prospect Crescent is a quiet residential street with plenty of on street parking, perfectly located moments from Whitton High Street, Whitton Station and local bus routes and is within the catchment areas for many very highly rated Richmond Borough schools.

- Two Double Bedrooms • First Floor Apartment • Modern Finish •
- Large Garden • Central Location • Outstanding School Catchment •



Total area (approx.): 66.1 sq. m (711.5 sq. ft)

Snellers Twickenham Sales
64-66 Heath Road
Twickenham
TW1 4BX
020 8892 5555
twickenhamsales@snellers.co.uk

Energy Rating: C We aim to make our particulars both accurate and reliable. However they are not guaranteed; nor do they form part of an offer or contract. If you require clarification on any points then please contact us, especially if you're traveling some distance to view. Please note that appliances and heating systems have not been tested and therefore no warranties can be given as to their good working order