

SNELLERS

ESTATE AGENTS



Gladstone Avenue, TW2

£595,000

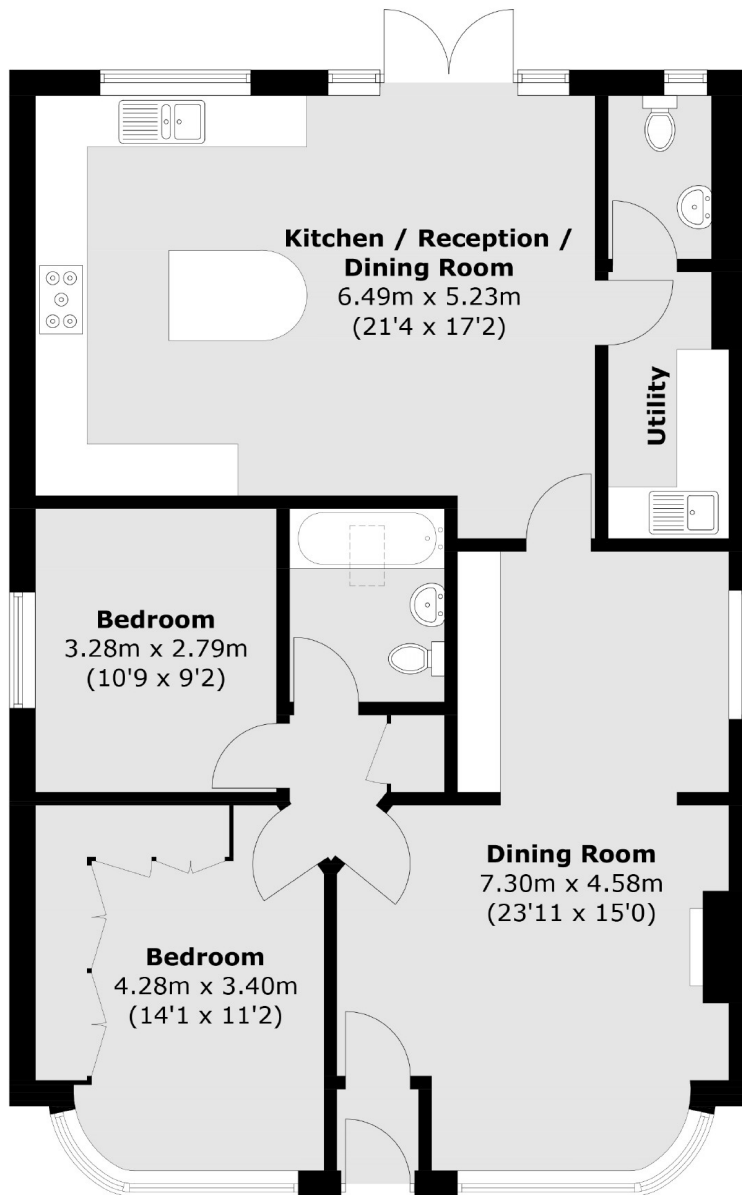
This charming two bedroom detached bungalow has a large garden, garage and scope to extend. The property comes with no onward chain and offers versatile accommodation, perfect for a downsize or a family.

Gladstone Avenue is located in the popular Rosebine development, with easy access to the A316 providing links to the M3, M25, Richmond, London and Heathrow. Kneller Gardens and the River Crane are nearby along with many outstanding schools and nurseries.

- Detached Bungalow • Well Presented • Two Bedrooms •
- Large Private Garden • Garage • Scope to Extend (STPP) •

SNELLERS

ESTATE AGENTS



Ground Floor

Total area (approx.): 99.7 sq. m (1,073.2 sq. ft)

Snellers Twickenham Sales
64-66 Heath Road
Twickenham
TW1 4BX
020 8892 5555
twickenhamsales@snellers.co.uk

Energy Rating: C We aim to make our particulars both accurate and reliable. However they are not guaranteed; nor do they form part of an offer or contract. If you require clarification on any points then please contact us, especially if you're traveling some distance to view. Please note that appliances and heating systems have not been tested and therefore no warranties can be given as to their good working order