

SNELLERS

ESTATE AGENTS



Waldegrave Park, TW1

£450,000

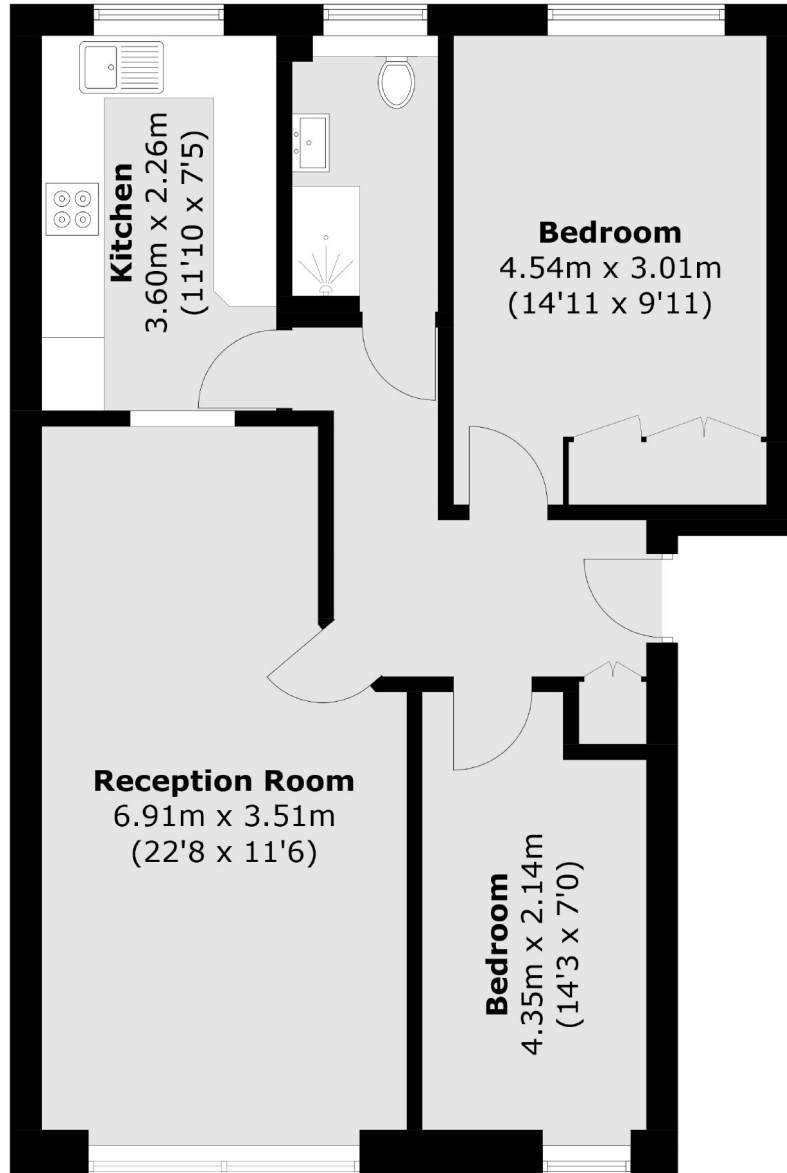
A fabulous apartment located in this desirable development with stunning communal gardens and a private garage. Presented in good condition, the accommodation provides two double bedrooms, a family bathroom, spacious kitchen and a large reception and dining room.

Tring Court is located at the river end of the prestigious Waldegrave Park, less than a mile walk from both Strawberry Hill & Teddington Stations and high streets. If you enjoy scenic walks, Bushy Park is just over a mile away.

- Garage • Popular Location • Spacious Accommodation •
- Two Double Bedrooms • Communal Gardens • No Onward Chain •

SNELLERS

ESTATE AGENTS



Total area (approx.): 66.7 sq. m (717.9 sq. ft)

Snellers Twickenham Sales
64-66 Heath Road
Twickenham
TW1 4BX
020 8892 5555
twickenhamsales@snellers.co.uk

Energy Rating: D We aim to make our particulars both accurate and reliable. However they are not guaranteed; nor do they form part of an offer or contract. If you require clarification on any points then please contact us, especially if you're traveling some distance to view. Please note that appliances and heating systems have not been tested and therefore no warranties can be given as to their good working order