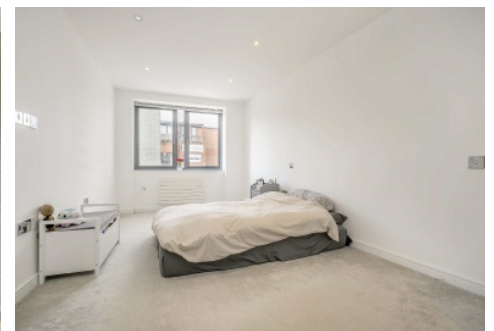


SNELLERS

ESTATE AGENTS



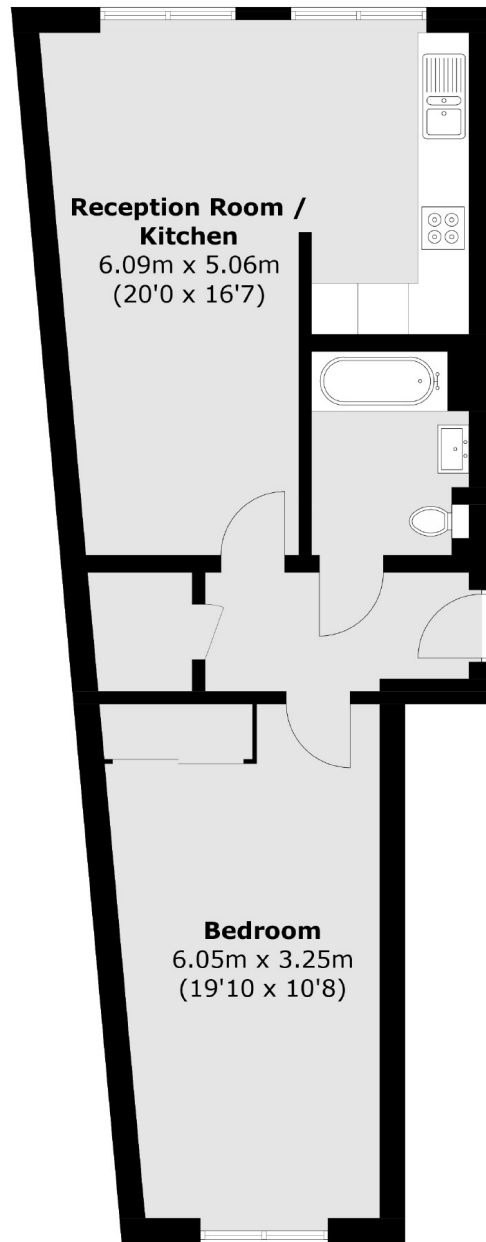
London Road, TW1

£425,000

This spacious one bedroom property is offered to the market with no onward chain. Benefiting from modern fixtures and fittings, this stunning property comes with the added features of wooden floors, intercom system, separate storage cupboard within communal areas and gas central heating throughout.

Sovereign House is moments from Twickenham mainline station with it's fast links to London Waterloo. Conveniently located for all the shops, bars and restaurants and is less than half a mile to the River Thames

- Central Location • Spacious One Bedroom • No Onward Chain •
- Storage Cupboard • Modern Finish • Great Transport Links •



Total area (approx.): 56.0 sq. m (602.8 sq. ft)

Snellers Twickenham Sales
64-66 Heath Road
Twickenham
TW1 4BX
020 8892 5555
twickenhamsales@snellers.co.uk

Energy Rating: C We aim to make our particulars both accurate and reliable. However they are not guaranteed; nor do they form part of an offer or contract. If you require clarification on any points then please contact us, especially if you're traveling some distance to view. Please note that appliances and heating systems have not been tested and therefore no warranties can be given as to their good working order