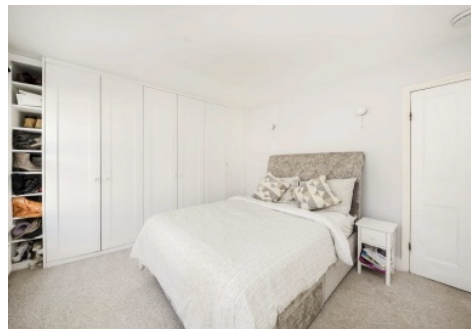


SNELLERS

ESTATE AGENTS



Sherland Road, TW1

£920,000

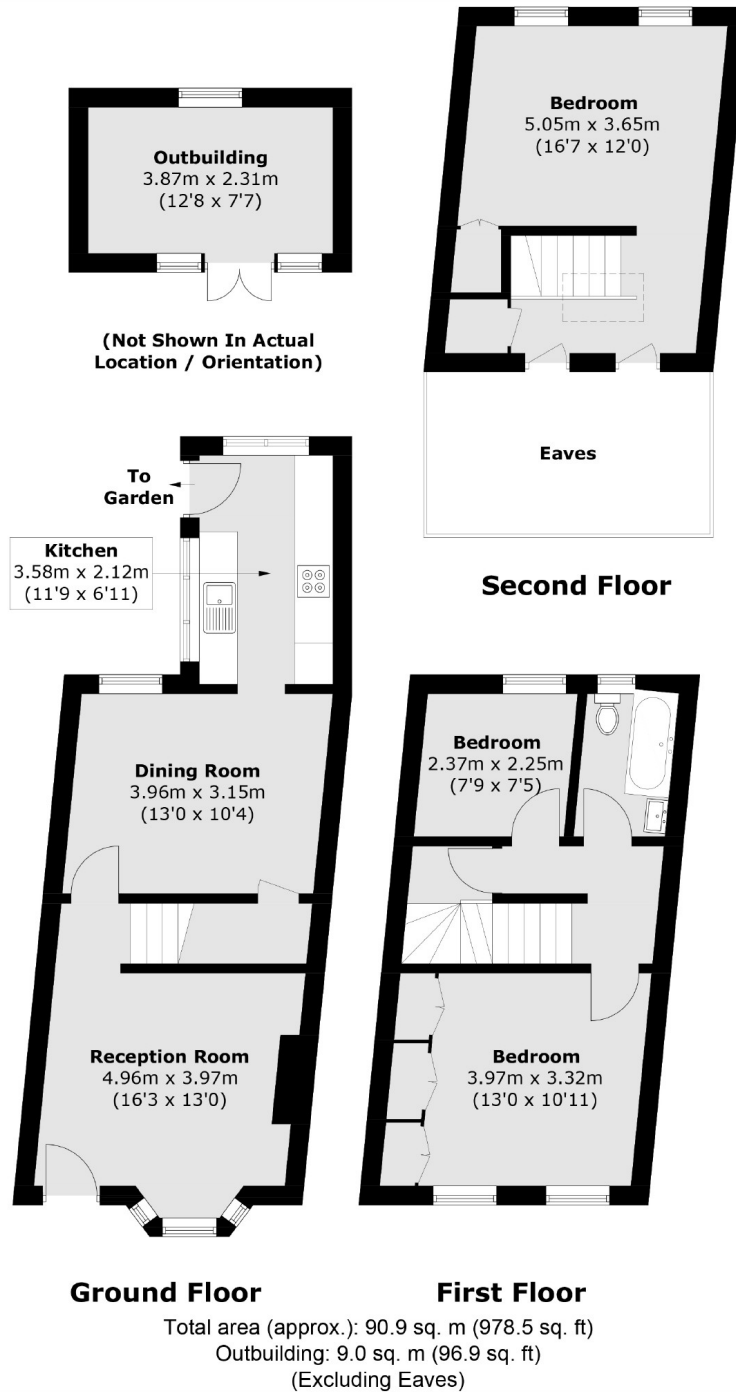
An immaculately presented family home in central Twickenham. Accommodation is spread over three floors and has two reception rooms, a shaker style kitchen, three bedrooms, a family bathroom and a pretty garden with a heated studio.

Sherland Road is located just behind Twickenham high street where you will find a vast array of shops, pubs and restaurants. The mainline station with fast links to London Waterloo is just a few hundred yards away.

- Three Bedrooms • Off-Street Parking • Central Location •
- Side Access • West Facing Garden • Potential To Extend (STPP) •

SNELLERS

ESTATE AGENTS



Snellers Twickenham Sales
64-66 Heath Road
Twickenham
TW1 4BX
020 8892 5555
twickenhamsales@snellers.co.uk

Energy Rating: D We aim to make our particulars both accurate and reliable. However they are not guaranteed; nor do they form part of an offer or contract. If you require clarification on any points then please contact us, especially if you're traveling some distance to view. Please note that appliances and heating systems have not been tested and therefore no warranties can be given as to their good working order