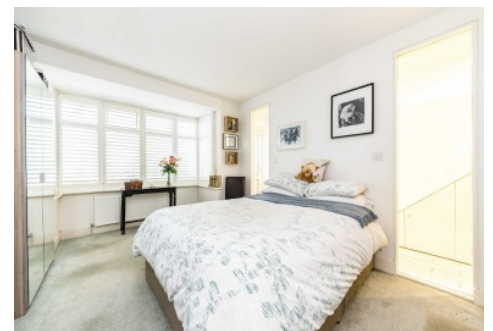


SNELLERS

ESTATE AGENTS



Whitton Road, TW2

£380,000

A simply stunning one bedroom ground floor maisonette which is a cut above what buyers are looking at in this price range. Having been fully renovated, remodelled and extended by the current owners, this property is ideal for someone looking to move straight in and who likes to entertain. Benefitting from a beautiful kitchen complete with island, bi folding doors, private terrace and no onward chain, this property is sure to be popular.

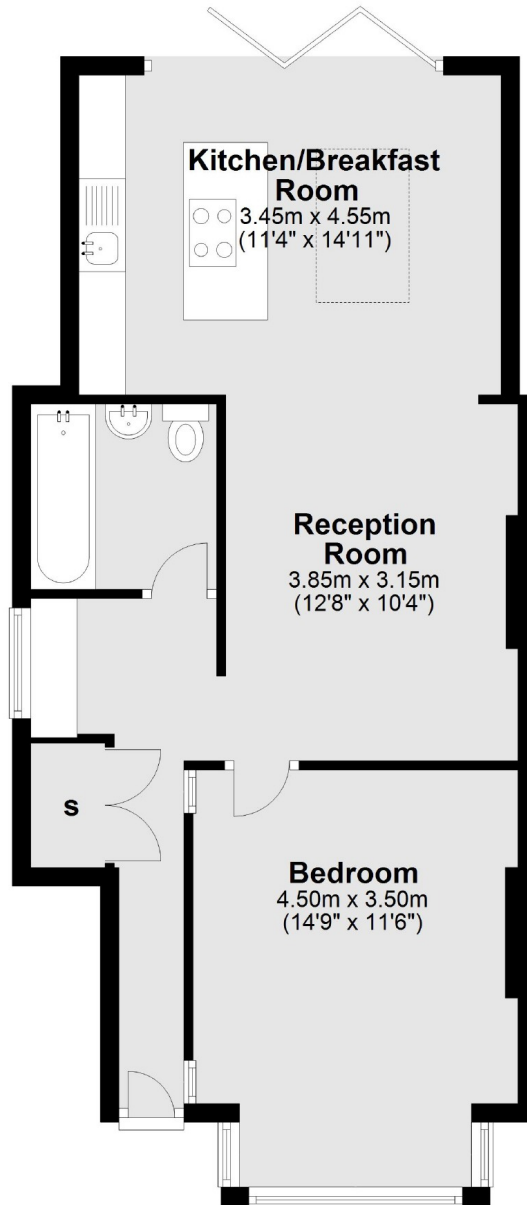
Whitton Road is conveniently located close to Twickenham High Street and less than a mile from Twickenham Station for fast trains to Waterloo.

- One Bedroom • Ground Floor • Maisonette •
- Extended Kitchen Area • No Onward Chain • Fully Renovated •

SNELLERS

ESTATE AGENTS

Ground Floor



Total area: approx. 58.0 sq. metres (624.1 sq. feet)

Snellers Twickenham Sales
64-66 Heath Road
Twickenham
TW1 4BX
020 8892 5555
twickenhamsales@snellers.co.uk

Energy Rating: C We aim to make our particulars both accurate and reliable. However they are not guaranteed; nor do they form part of an offer or contract. If you require clarification on any points then please contact us, especially if you're traveling some distance to view. Please note that appliances and heating systems have not been tested and therefore no warranties can be given as to their good working order