



## London Road, TW1

£659,950

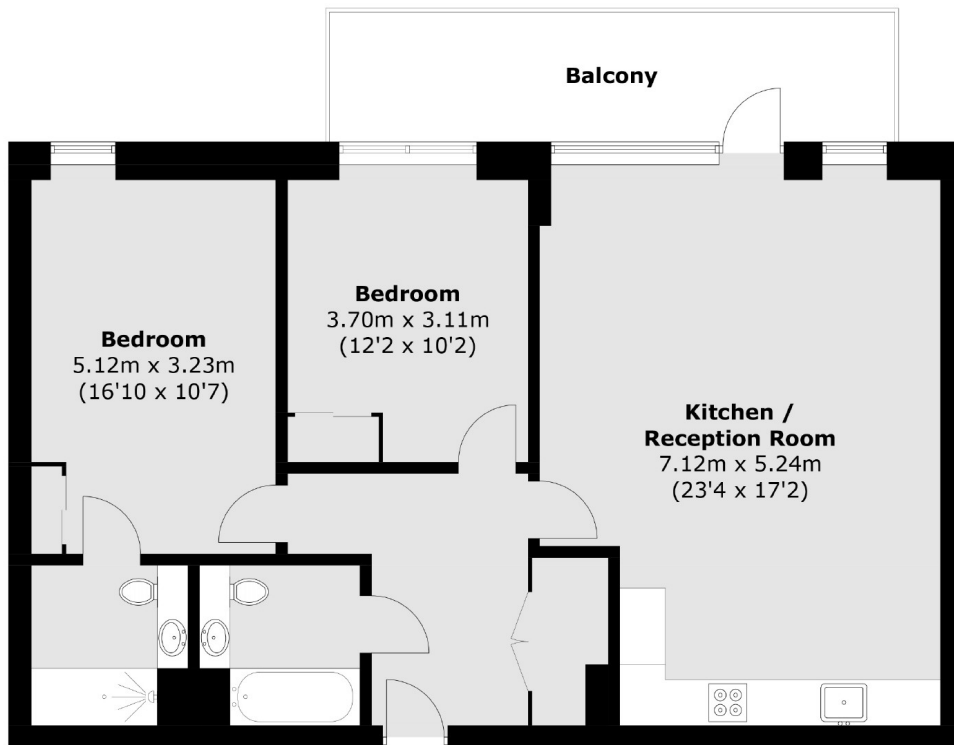
Set in an exclusive development, this modern first floor apartment includes an open-plan reception room/kitchen, two double bedrooms, two bathrooms, ample storage and a large balcony. Further benefits include no onward chain and over 900 square ft of living space.

Pullman Court is a fantastic modern development located in the heart of Twickenham with its river and parkland walks, excellent school catchment and bars/restaurants. Situated beside Twickenham mainline station it offers a quick route into the city.

- Two Bedrooms • Two Bathrooms • Exceptional Finish •
- Large Balcony • Town Centre Location • No Onward Chain •

# SNELLERS

ESTATE AGENTS



Total area (approx.): 86.6 sq. m (932.2 sq. ft)  
Balcony (approx.): 12.6 sq. m (135.6 sq. ft)

Snellers Twickenham Sales  
64-66 Heath Road  
Twickenham  
TW1 4BX  
020 8892 5555  
twickenhamsales@snellers.co.uk

Energy Rating: B We aim to make our particulars both accurate and reliable. However they are not guaranteed; nor do they form part of an offer or contract. If you require clarification on any points then please contact us, especially if you're traveling some distance to view. Please note that appliances and heating systems have not been tested and therefore no warranties can be given as to their good working order