

# SNELLERS

ESTATE AGENTS



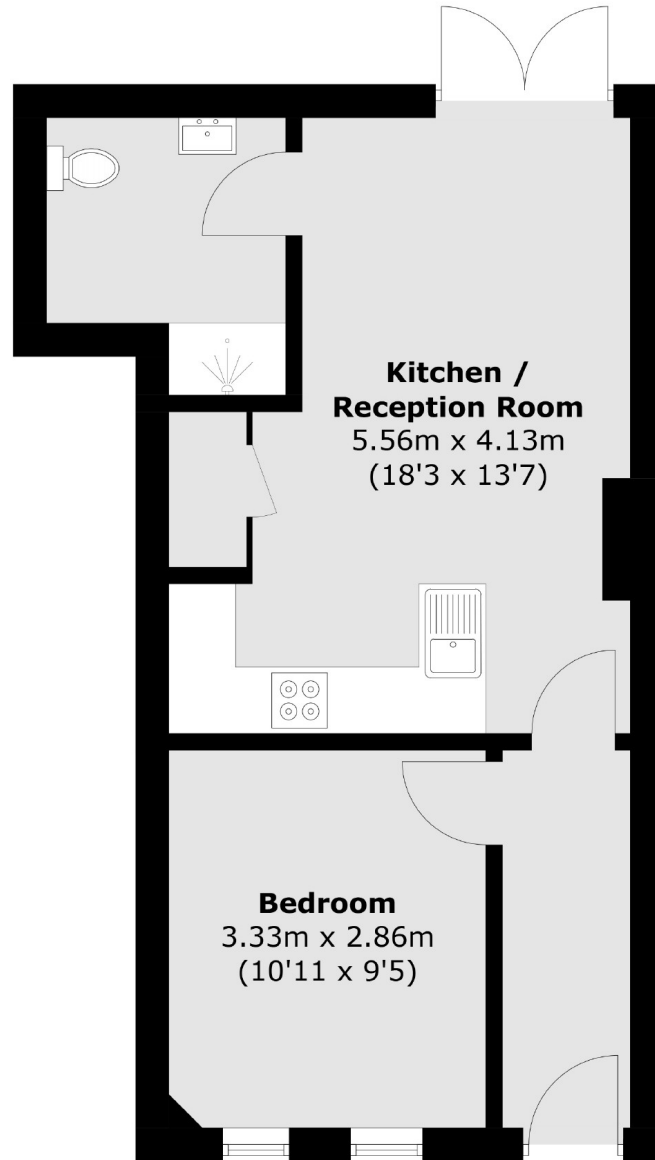
## Hampton Road, TW2

£349,950

This recently refurbished ground floor garden flat is beautifully presented throughout and is being sold with no onward chain. This property benefits from a double bedroom, open plan kitchen/reception and a south facing private garden.

Hampton Road is conveniently located between Twickenham and Strawberry Hill and is perfect for an array of transport links which will take you into many town centres. Twickenham Green is also a short walk away with it's local shops, pubs, bars and restaurants.

- South Facing Garden • Popular Location • Fully Refurbished •
- No Onward Chain • One Double Bedroom • Great Transport Links •



Total area (approx.): 40.2 sq. m (432.7 sq. ft)

Snellers Twickenham Sales  
64-66 Heath Road  
Twickenham  
TW1 4BX  
020 8892 5555  
[twickenhamsales@snellers.co.uk](mailto:twickenhamsales@snellers.co.uk)

Energy Rating: We aim to make our particulars both accurate and reliable. However they are not guaranteed; nor do they form part of an offer or contract. If you require clarification on any points then please contact us, especially if you're traveling some distance to view. Please note that appliances and heating systems have not been tested and therefore no warranties can be given as to their good working order