

# SNELLERS

ESTATE AGENTS



## Riverview Gardens, TW1

£1,250,000

A rarely available, detached Victorian family home on this sought after river road, moments from Strawberry Hill. Benefitting from a large front reception room, kitchen/dining area, utility/ study, four bedrooms, an en suite wet room and a garage at the side of the property.



On the ground floor there is a receiving hallway with downstairs w/c, a large front reception room with bay window and original features and a further dining area opening onto a large extended kitchen with further access onto a utility room and study area.

On the first floor there are three bedrooms with a modern family bathroom and a further double bedroom on the top floor with an en suite wet room.

There is also the added benefit of a garage at the side of the property.

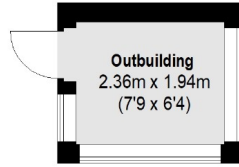
Riverview Gardens is one of Strawberry Hill's prime river roads. The property is ideally located close to The River Thames, Strawberry Hill Station and Twickenham town centre. The area also offers many excellent state and private schools.

- Rarely Available • Detached • Four Bedrooms •
- Excellent School Catchment • Sought After Road • Garage •

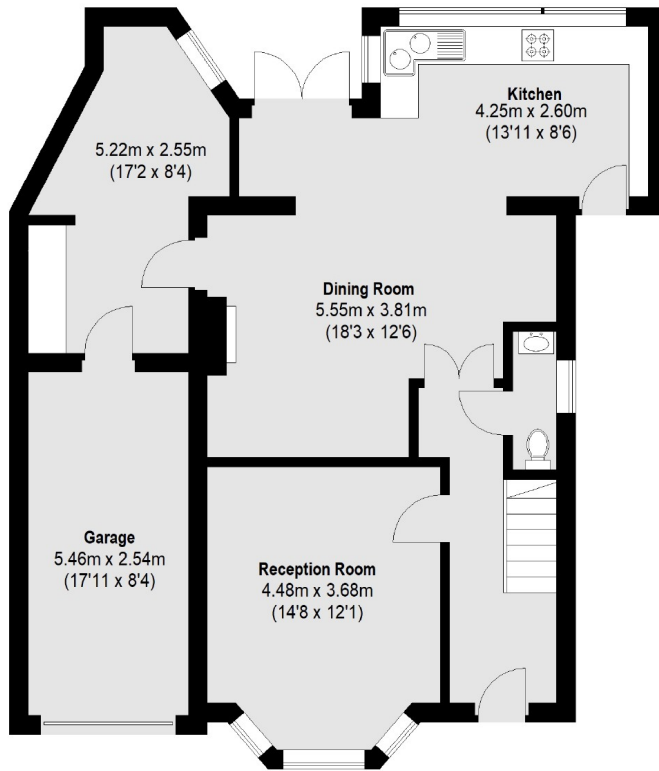


# SNELLERS

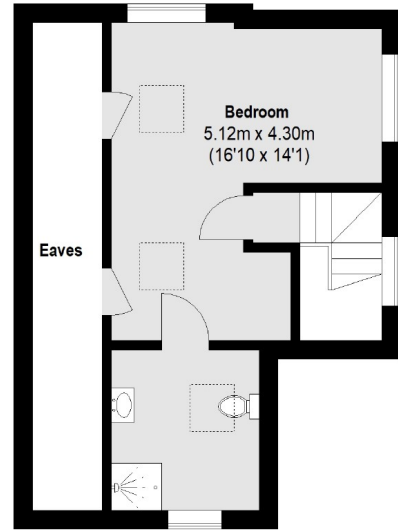
ESTATE AGENTS



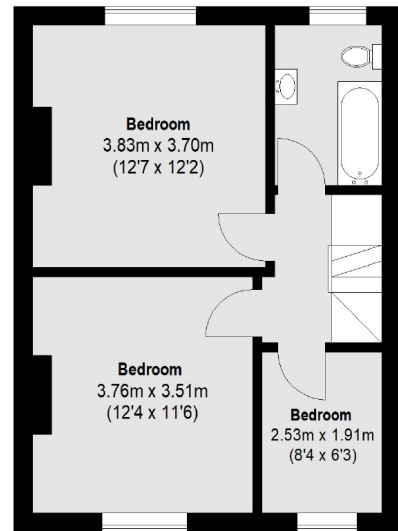
(Not Shown In Actual  
Location / Orientation)



**Ground Floor**



**Second Floor**



**First Floor**

Total area (approx.): 161.62 sq. m (1740 Sq. ft)  
(Including Garage & Excluding Eaves)  
Outbuilding: 4.75 sq. m (51 Sq. ft)

Snellers Twickenham Sales  
64-66 Heath Road  
Twickenham  
TW1 4BX  
020 8892 5555  
twickenhamsales@snellers.co.uk

Energy Rating: E We aim to make our particulars both accurate and reliable. However they are not guaranteed; nor do they form part of an offer or contract. If you require clarification on any points then please contact us, especially if you're traveling some distance to view. Please note that appliances and heating systems have not been tested and therefore no warranties can be given as to their good working order