



Park Road, KT1

£395,000

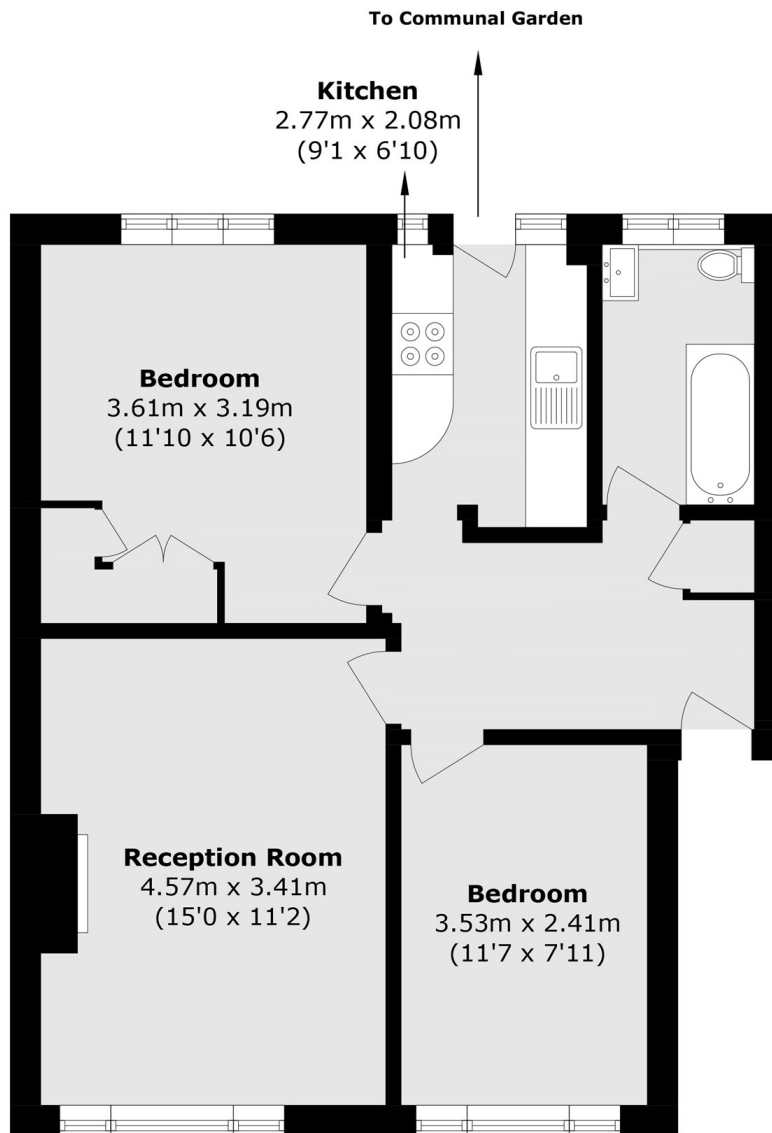
Located on the ground floor of this popular 1930's development which overlooks the Royal Bushy Park, this fantastic two double bedroom flat is perfect for downsizers or as first time purchase. Further benefits include access to well maintained communal gardens.

Park Court is a sought after purpose built block excellently located in Hampton Wick and is just a stone's throw away from Royal Bushy Park. Park Court is close to Kingston town centre where you will find a vast array of shops, bars and restaurants including access to the River Thames.

- Two Double Bedrooms • Bright And Spacious • Close To Bushy Park •
- Ground Floor • Communal Gardens • Close To Kingston Town Centre •

SNELLERS

ESTATE AGENTS



Total area (approx.): 55.0 sq. m (592 sq. ft)

Snellers Teddington Sales
74 Broad Street
Teddington
TW11 8QX
020 8408 8040
teddingtonsales@snellers.co.uk

Energy Rating: C We aim to make our particulars both accurate and reliable. However they are not guaranteed; nor do they form part of an offer or contract. If you require clarification on any points then please contact us, especially if you're traveling some distance to view. Please note that appliances and heating systems have not been tested and therefore no warranties can be given as to their good working order