



Teddington Park Road, TW11

£575,000

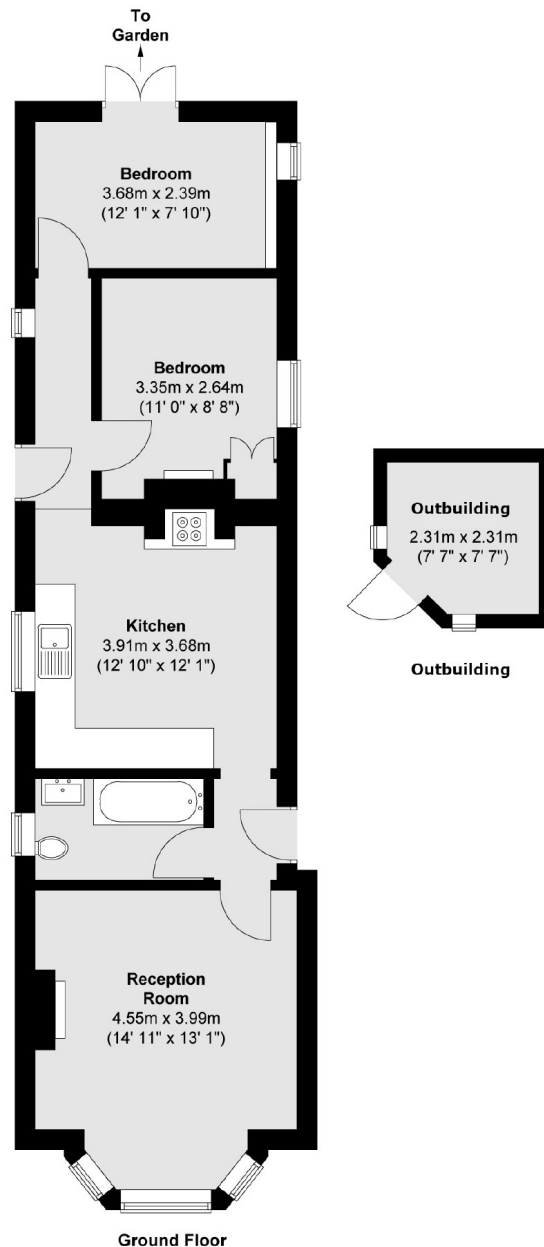
A stunning period conversion occupying the left-hand side of this beautiful house. The main reception has grand proportions, ornate cornicing, and a striking marble fireplace. The kitchen is equally impressive stylishly designed with ample space to dine. Two double bedrooms, a modern bathroom, and a beautifully landscaped, south facing, private garden complete this exceptional property.

Ideally located in a quiet residential street just moments from the River Thames, this property enjoys the best of Teddington living. Central Teddington, with its vibrant selection of shops, cafés, and restaurants is just a short walk away, while excellent transport links and green open spaces complete the appeal of this sought-after address.

- Grand Reception • Eat In Kitchen • Two Double Bedrooms •
- South Facing Private Garden • Period Conversion • Lease Over 100 Years •

SNELLERS

ESTATE AGENTS



Ground Floor

Total area (approx.) : 60.1 sq. m (647 sq. ft)
Total shed area (approx.) : 4.9 sq. m (53 sq. ft)

Snellers Teddington Sales
74 Broad Street
Teddington
TW11 8QX
020 8408 8040
teddingtonsales@snellers.co.uk

Energy Rating: D We aim to make our particulars both accurate and reliable. However they are not guaranteed; nor do they form part of an offer or contract. If you require clarification on any points then please contact us, especially if you're traveling some distance to view. Please note that appliances and heating systems have not been tested and therefore no warranties can be given as to their good working order