

# SNELLERS

ESTATE AGENTS



**Elmtree Road, TW11**

**£699,950**

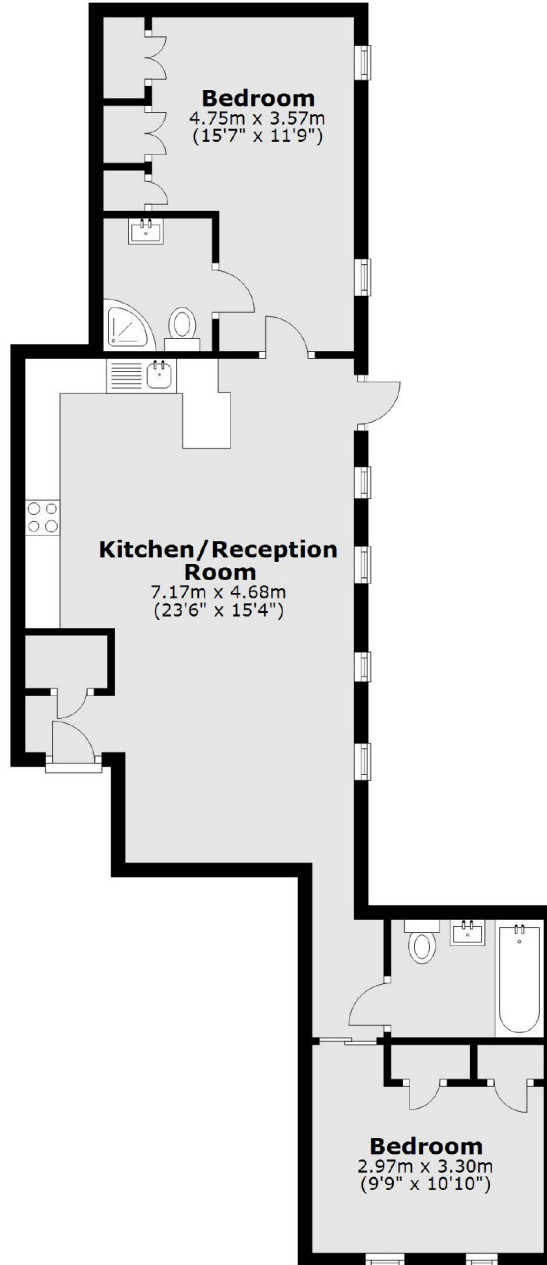
This beautifully presented ground floor two double bedroom, two bathroom apartment benefits from a private garden and allocated parking, set within a gated, development just moments from Teddington High Street.

Located on Elmtree Road, a quiet turning off Somerset Road, the property offers excellent transport connections via nearby train and bus routes. It's perfectly positioned for access to Teddington High Street, Bushy Park, and the River Thames.

- Two Double Bedrooms • Two Modern Bathrooms • Private Garden •
- Gated Parking • Immaculate Throughout •

# SNELLERS

ESTATE AGENTS



Total area: approx. 64.8 sq. metres (697.2 sq. feet)

Snellers Teddington Sales  
74 Broad Street  
Teddington  
TW11 8QX  
020 8408 8040  
teddingtonsales@snellers.co.uk

Energy Rating: C We aim to make our particulars both accurate and reliable. However they are not guaranteed; nor do they form part of an offer or contract. If you require clarification on any points then please contact us, especially if you're traveling some distance to view. Please note that appliances and heating systems have not been tested and therefore no warranties can be given as to their good working order