

# SNELLERS

ESTATE AGENTS

---



**Hampton Road, TW11**

**£1,525,000**

This is one of those homes that grabs you the moment you walk through the door. A big, beautiful Victorian semi with all the charm you'd hope for, high ceilings, period features, and loads of space to spread out. Set over three floors, it's a proper family-sized home in the heart of Teddington, just a stone's throw from everything you need.



The ground floor is all about space and flow. There's a lovely wide double reception room at the front, with high ceilings and original details give it real character. Head through to the back and you'll find a large kitchen/dining room, flooded with light thanks to the French doors that open straight out to the garden. There's also a handy loo tucked away.

Up on the first floor, there are three good-sized bedrooms, all with built-in wardrobes. One of the rooms even has a cool mezzanine sleeping area, ideal for a teenager's den or just a really fun guest room. You will also find the family bathroom, clean, modern and well laid out for busy mornings.

The top floor feels like a retreat. A generous bedroom with plenty of space to relax, which leads to a large, bathroom complete with built-in storage. There's also access up here to the loft storage, so you can keep all the Christmas decorations and camping gear well out of the way.

You're moments from Teddington's high street, with its lovely independent shops, cafes and restaurants. Bushy Park is just around the corner, ideal for weekend strolls or morning runs and you're in a great spot for local schools too.

- Semi Detached • Victorian • Four Bedrooms •
- Over 2400 sqft • Secluded South Facing Garden • Period Features •





# SNELLERS

ESTATE AGENTS

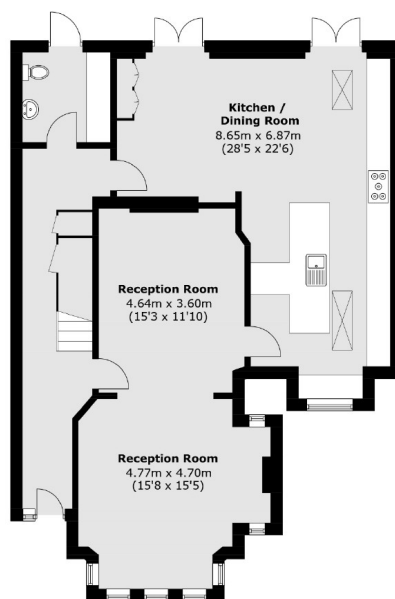


## Outbuilding

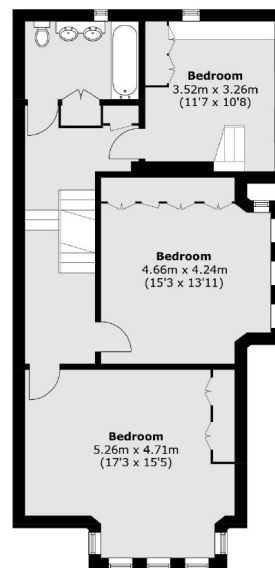
(Not Shown In Actual  
Location / Orientation)



## Second Floor



## Ground Floor



## First Floor

Total area (approx.): 225.9 sq. m (2,431.5 sq. ft)

Outbuilding (approx.): 9.9 sq. m (106.5 sq. ft)  
(Excluding Eaves)

Snellers Teddington Sales  
74 Broad Street  
Teddington  
TW11 8QX  
020 8408 8040  
teddingtonsales@snellers.co.uk

Energy Rating: D We aim to make our particulars both accurate and reliable. However they are not guaranteed; nor do they form part of an offer or contract. If you require clarification on any points then please contact us, especially if you're traveling some distance to view. Please note that appliances and heating systems have not been tested and therefore no warranties can be given as to their good working order