



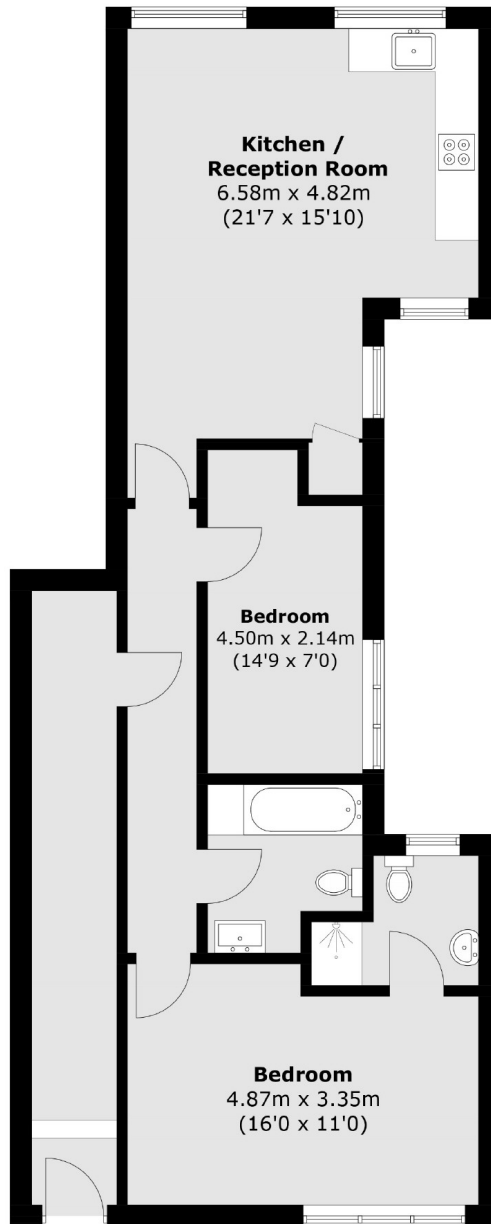
Elfin Grove, TW11

£399,950

A stunning, newly converted two double bedroom, two bathrooms including one en-suite flat situated in the heart of central Teddington, offering plenty of contemporary living and natural light. This spacious and stylish apartment is offered to the market with no onward chain.

Located just moments from Teddington's vibrant High Street, with its array of shops, cafés, and restaurants, the property is also within walking distance of Teddington Station, offering excellent transport links into London Waterloo.

- Large Reception • Open Plan Kitchen • Private Terrace •
- Two Double Bedrooms • Two Bathrooms • Central Teddington •



Total area (approx.): 78.6 sq. m (846.0 sq. ft)

Snellers Teddington Sales
74 Broad Street
Teddington
TW11 8QX
020 8408 8040
teddingtonsales@snellers.co.uk

Energy Rating: We aim to make our particulars both accurate and reliable. However they are not guaranteed; nor do they form part of an offer or contract. If you require clarification on any points then please contact us, especially if you're traveling some distance to view. Please note that appliances and heating systems have not been tested and therefore no warranties can be given as to their good working order