



High Street, KT1

£699,950

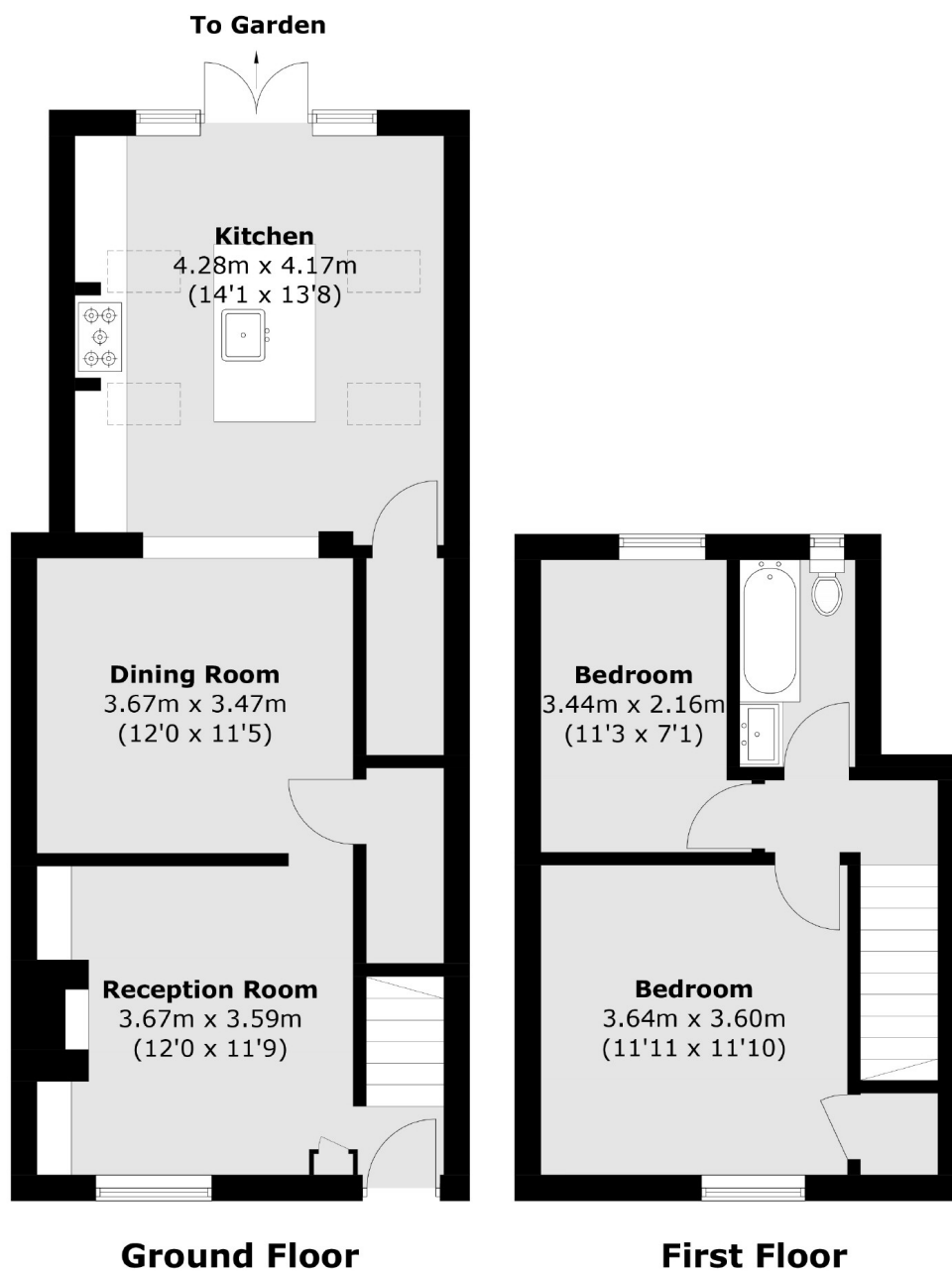
A beautifully presented two bedroom end-terraced cottage which has been extended by the current owners to provide over 900 sq ft of living space set over two floors. This house has the added advantage of an off-street parking space.

This house is situated in an enviable location almost opposite Hampton Wick station. Kingston town centre with its superb shopping facilities is just a short distance away, and there is easy access to both Bushy Park and Home Park.

- Two Bedrooms • Upstairs Bathroom • Extended Kitchen •
- Two Receptions • Pretty Garden • Parking Spaces •

SNELLERS

ESTATE AGENTS



Total area (approx.): 85.7 sq. m (922.4 sq. ft)

Snellers Teddington Sales
74 Broad Street
Teddington
TW11 8QX
020 8408 8040
teddingtonsales@snellers.co.uk

Energy Rating: D We aim to make our particulars both accurate and reliable. However they are not guaranteed; nor do they form part of an offer or contract. If you require clarification on any points then please contact us, especially if you're traveling some distance to view. Please note that appliances and heating systems have not been tested and therefore no warranties can be given as to their good working order