

SNELLERS

ESTATE AGENTS



Portsmouth Road, KT1

£549,950

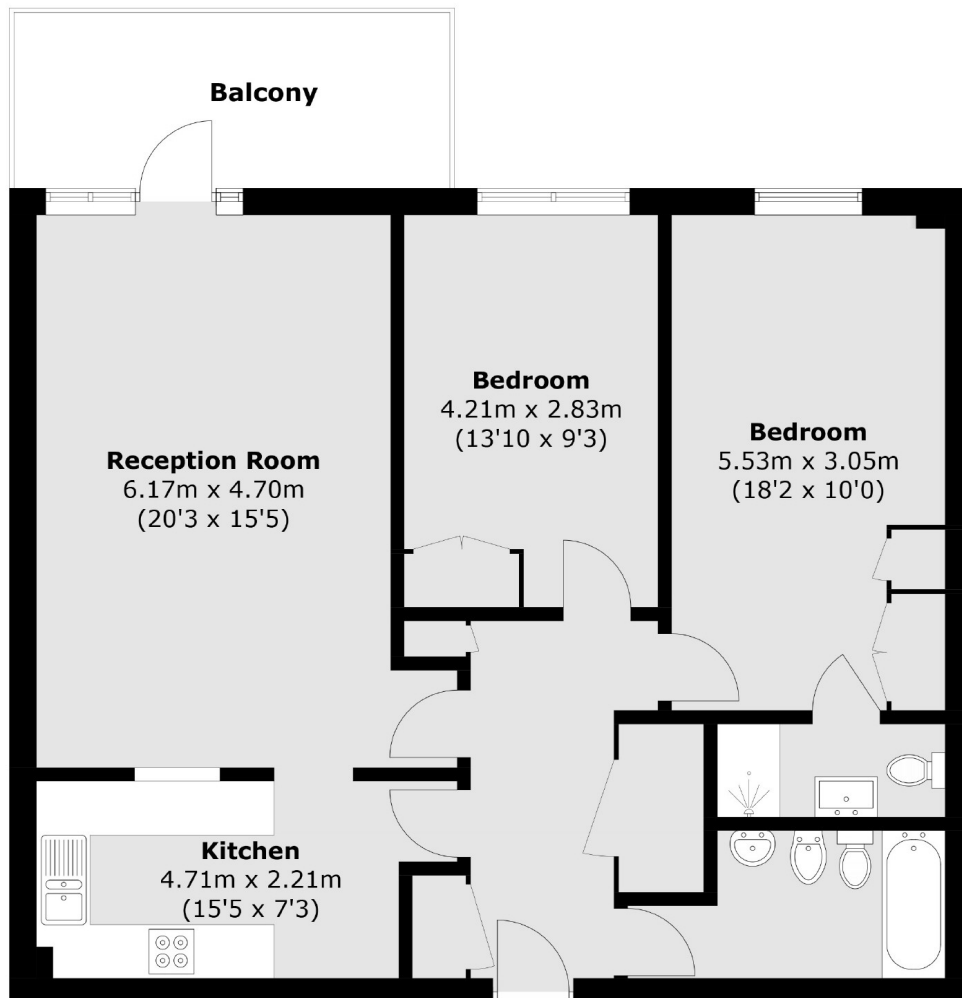
A bright and airy ground floor two bedroom apartment forming part of a very popular building situated opposite the River Thames. This apartment offers 932 sq ft of living space and has the advantage of residents parking, a balcony, shared freehold and no forward chain.

This building occupies a prominent corner position just opposite the River Thames. Kingston town centre is less than a mile away, and there are many places to eat and drink nearby. Kingston station is also close to hand.

- Large Reception • Two Bedrooms • Two Bathrooms •
- Kitchen • Balcony • Two Parking Spaces •

SNELLERS

ESTATE AGENTS



Total area (approx.): 86.6 sq. m (932.2 sq. ft)
Balcony : 9.5 sq. m (102.2 sq. ft)

Snellers Teddington Sales
74 Broad Street
Teddington
TW11 8QX
020 8408 8040
teddingtonsales@snellers.co.uk

Energy Rating: C We aim to make our particulars both accurate and reliable. However they are not guaranteed; nor do they form part of an offer or contract. If you require clarification on any points then please contact us, especially if you're traveling some distance to view. Please note that appliances and heating systems have not been tested and therefore no warranties can be given as to their good working order