

SNELLERS

ESTATE AGENTS



Albany Mews, KT2

£1,000,000

This contemporary style townhouse is situated in a lovely residential mews, close to the River Thames. The house offers almost 1,200 sq.ft of living space set over three floors and has the advantage of a private garden, balcony and off-street parking. This house also has the benefit of no chain.



On the ground floor there is an entrance hall, and a cloakroom with WC. At the rear of the house there is a kitchen/dining room with fitted units and a breakfast bar. There is plenty of space for a dining table & chairs, and there are sliding doors onto the rear garden.

On the first floor, there is a large reception room to the front and this room has sliding glazed doors onto the balcony. At the rear of the house, there is a double bedroom which overlooks the garden and has fitted wardrobes.

On the top floor there is a principal bedroom, which has an en suite shower room. There is another bedroom on this floor, which has a fitted wardrobe and there is also a family bathroom.

Externally, there is a great size private garden and to the front of the house there is off-street parking.

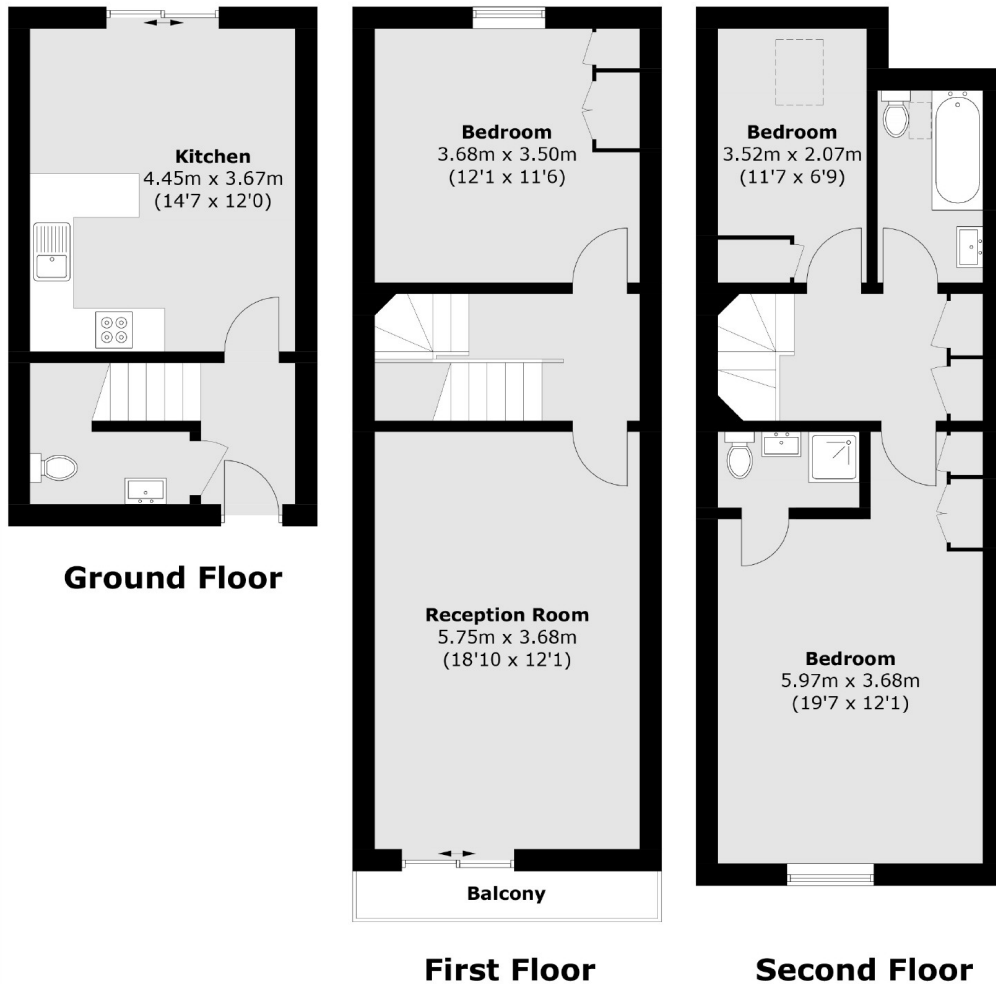
The house is situated in a quiet location, just moments from the River Thames. Kingston station and the busy town centre are less than a mile away, and there are local shops in Ham about half a mile away.

- Three Bedrooms • Two Bathrooms • Kitchen/Dining Room •
- Large Reception • No Chain • Garden & Balcony •



SNELLERS

ESTATE AGENTS



Total area (approx.): 106.4 sq. m (1,145.2 sq. ft)

Snellers Teddington Sales
74 Broad Street
Teddington
TW11 8QX
020 8408 8040
teddingtonsales@snellers.co.uk

Energy Rating: TBC We aim to make our particulars both accurate and reliable. However they are not guaranteed; nor do they form part of an offer or contract. If you require clarification on any points then please contact us, especially if you're traveling some distance to view. Please note that appliances and heating systems have not been tested and therefore no warranties can be given as to their good working order