



Harrowdene Gardens, TW11

£335,000

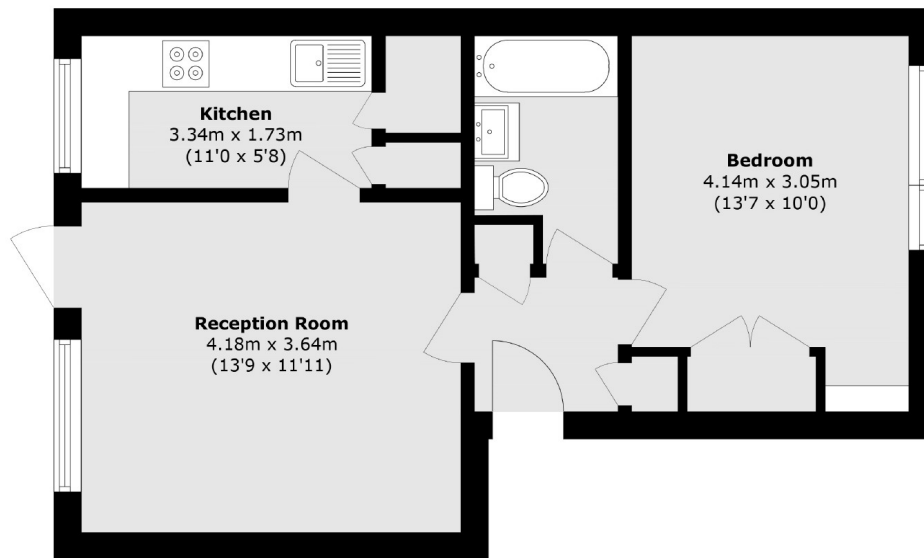
A lovely ground floor one bedroom flat forming part of a lovely development situated opposite Bushy Park. The spacious reception room has a door leading onto gardens. This apartment is situated just a few minutes walk from Teddington station, has the advantage of a garage and no forward chain.

The apartment is ideally situated in a popular development directly opposite Bushy Park, and only 0.2 Miles from Teddington Station. There is easy access to Kingston either walking or by bus.

- Large Reception Room • Fitted Kitchen • Double Bedroom •
- Bathroom • Garage • No Chain •

SNELLERS

ESTATE AGENTS



Total area (approx.): 43.2 sq. m (465.0 sq. ft)

Snellers Teddington Sales
74 Broad Street
Teddington
TW11 8QX
020 8408 8040
teddingtonsales@snellers.co.uk

Energy Rating: We aim to make our particulars both accurate and reliable. However they are not guaranteed; nor do they form part of an offer or contract. If you require clarification on any points then please contact us, especially if you're traveling some distance to view. Please note that appliances and heating systems have not been tested and therefore no warranties can be given as to their good working order