

SNELLERS

ESTATE AGENTS



St. Marys Avenue, TW11

£2,750 PCM

A three bedroom mid-terraced family house situated in a cul-de-sac, very close to the High street and Teddington Mainline station.



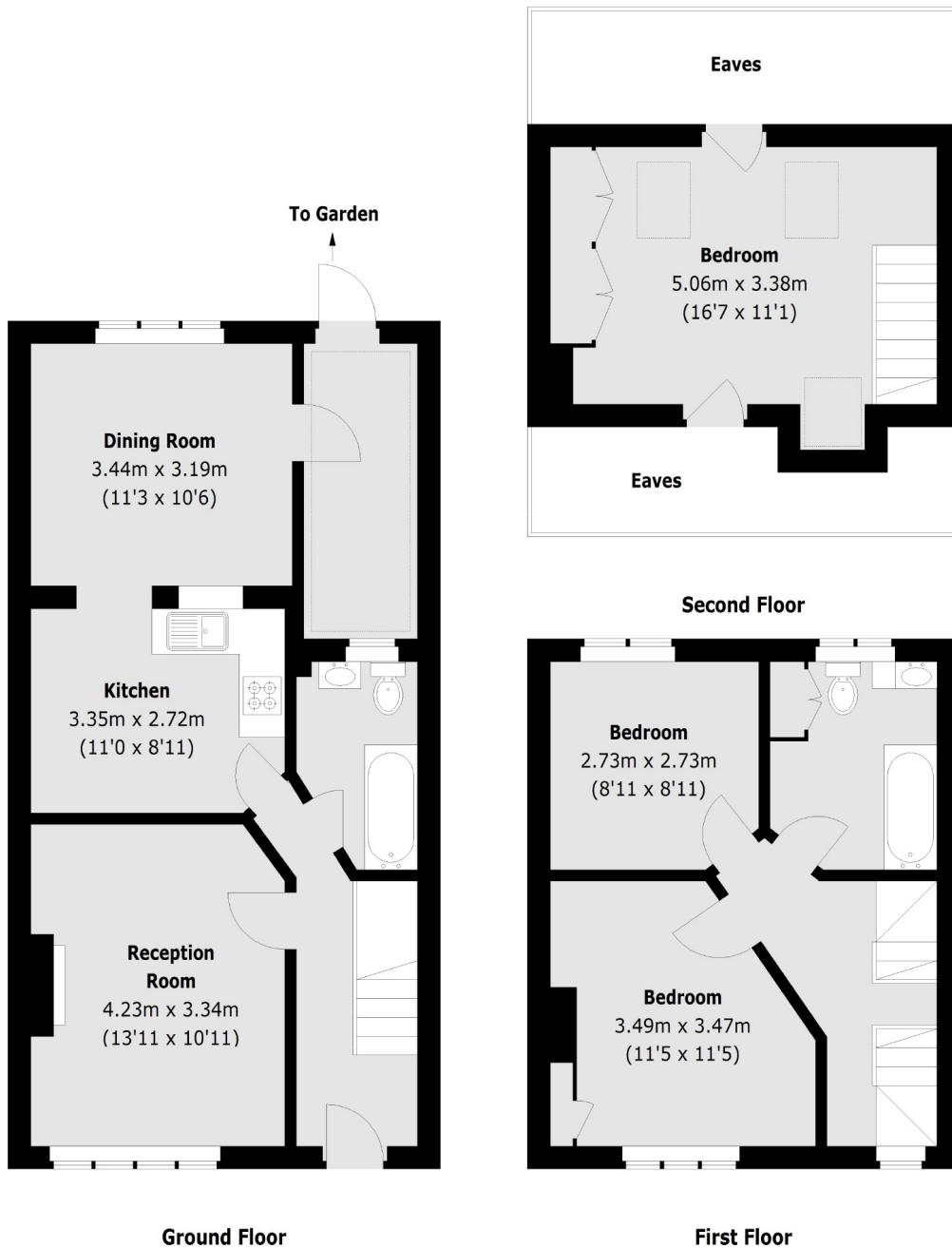
St. Mary's Avenue is situated just off Park Lane, and is just 0.3 miles from Teddington mainline station and a short distance further from Bushy Park.

- Three Bedrooms • Two Bathrooms • Private Garden •
- Extended Kitchen/Dining Room • Central Teddington • Family Home •



SNELLERS

ESTATE AGENTS



Total area (approx.): 105.2 sq. m (1132.3 Sq. ft) (Excluding Eaves)

Snellers Teddington Lettings
74 Broad Street
Teddington
TW11 8QX
020 8614 6140
teddingtonlettings@snellers.co.uk

Energy Rating: D We aim to make our particulars both accurate and reliable. However they are not guaranteed; nor do they form part of an offer or contract. If you require clarification on any points then please contact us, especially if you're traveling some distance to view. Please note that appliances and heating systems have not been tested and therefore no warranties can be given as to their good working order