

SNELLERS

ESTATE AGENTS



Thamespoint, TW11

£2,695 PCM

A stunning two double bedroom riverside apartment with a private balcony overlooking the marina with amazing river views.



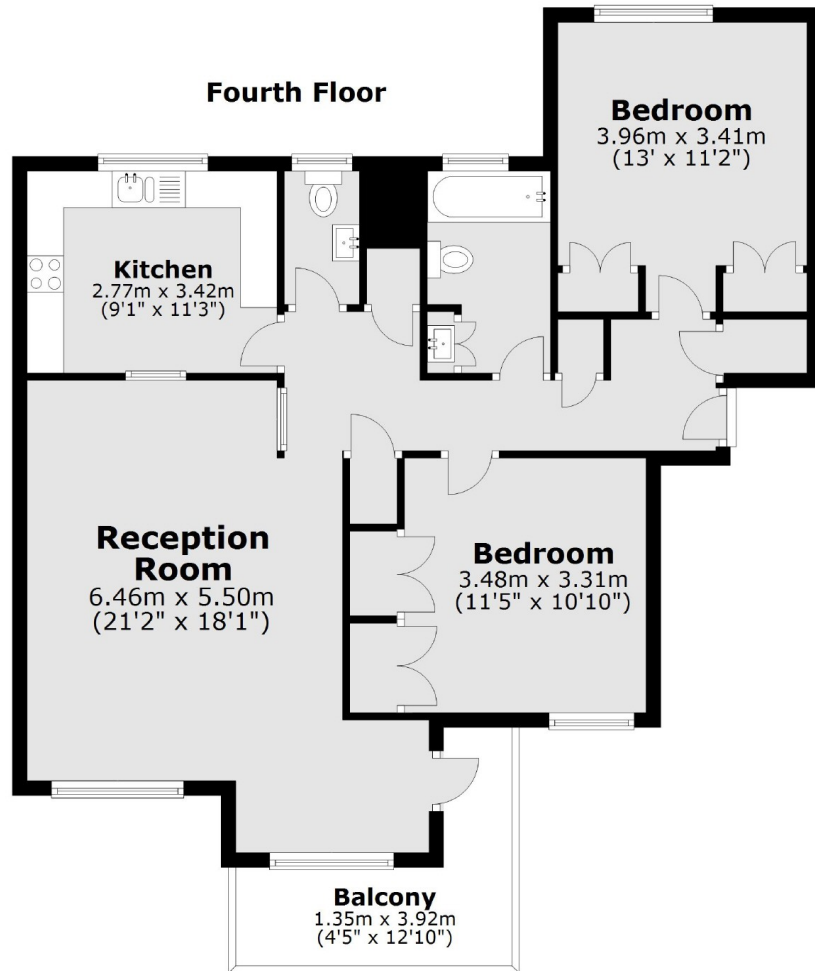
Thamespoint is tucked away in a quiet development within well maintained communal grounds just over half a mile from Hampton Wick Station and moments from nearby parks.

- Two Double Bedrooms • Riverside Development • Private Balcony •
- Allocated Parking Space • Communal Gardens • Heated Swimming Pool •
- Tennis Court •



SNELLERS

ESTATE AGENTS



Total area: approx. 84.6 sq. metres (910.9 sq. feet)

Snellers Teddington Lettings
74 Broad Street
Teddington
TW11 8QX
020 8614 6140
teddingtonlettings@snellers.co.uk

Energy Rating: C We aim to make our particulars both accurate and reliable. However they are not guaranteed; nor do they form part of an offer or contract. If you require clarification on any points then please contact us, especially if you're traveling some distance to view. Please note that appliances and heating systems have not been tested and therefore no warranties can be given as to their good working order