

# SNELLERS

ESTATE AGENTS

---



## Birkenhead Avenue, KT2

£339,950

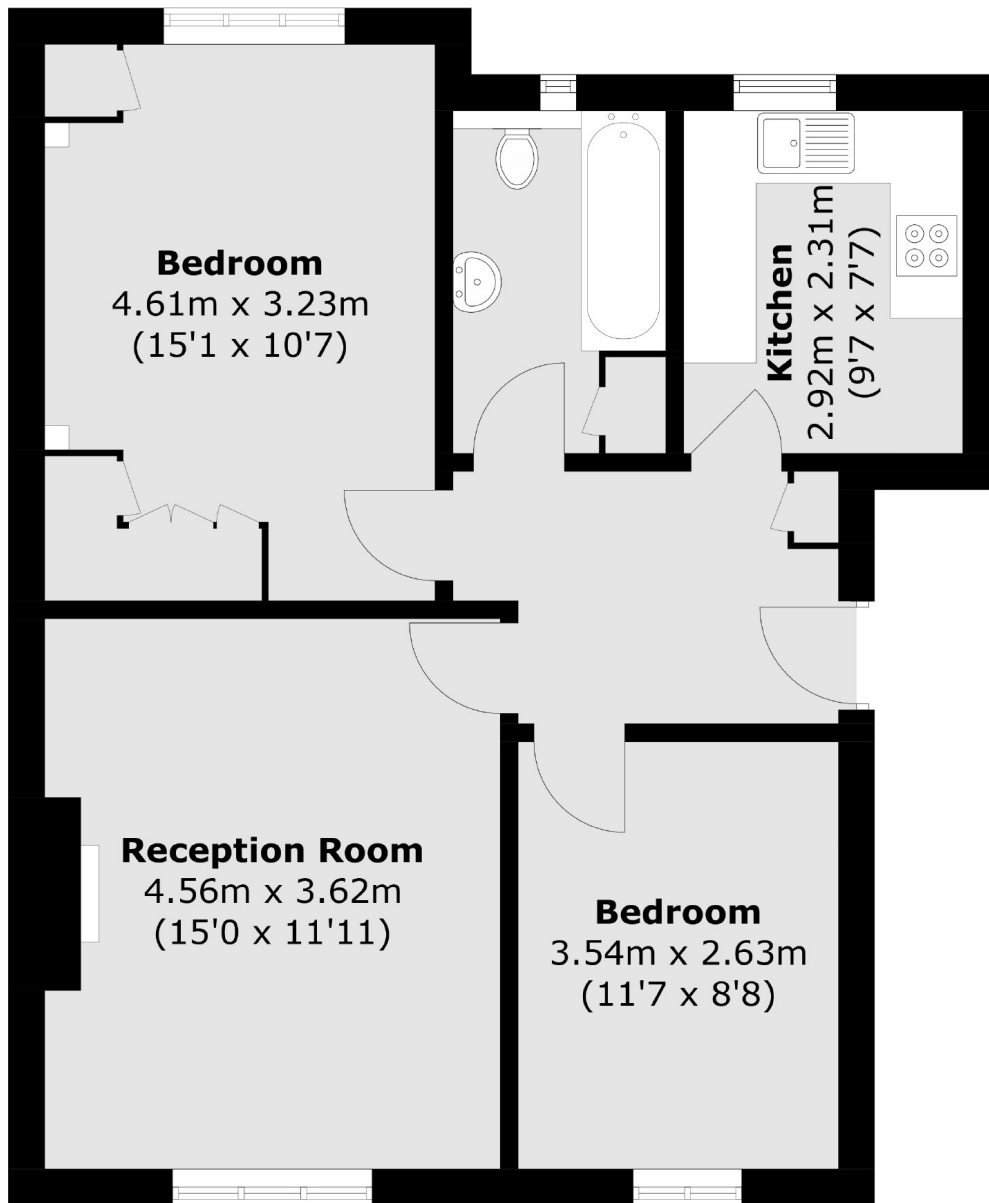
A light and airy ground floor two bedroom apartment forming part of a popular landmark development. This apartment offers almost 700 sq ft of living space, residents parking and there is the added advantage of no chain.

This apartment forms part of a 'landmark' development very close to Norbiton Station. There are local shops and bus routes almost on your doorstep and Kingston town centre with fabulous shops and riverside bars & restaurants are just a little further.

- Two Double Bedrooms • Large Reception • Fitted Kitchen •
- Bathroom • Residents Parking • No Chain •

# SNELLERS

ESTATE AGENTS



Total area (approx.): 62.4 sq. m (671.7 sq. ft)

Snellers Teddington Sales  
74 Broad Street  
Teddington  
TW11 8QX  
020 8408 8040  
teddingtonsales@snellers.co.uk

Energy Rating: C We aim to make our particulars both accurate and reliable. However they are not guaranteed; nor do they form part of an offer or contract. If you require clarification on any points then please contact us, especially if you're traveling some distance to view. Please note that appliances and heating systems have not been tested and therefore no warranties can be given as to their good working order