



Bearfield Road, KT2

£625,000

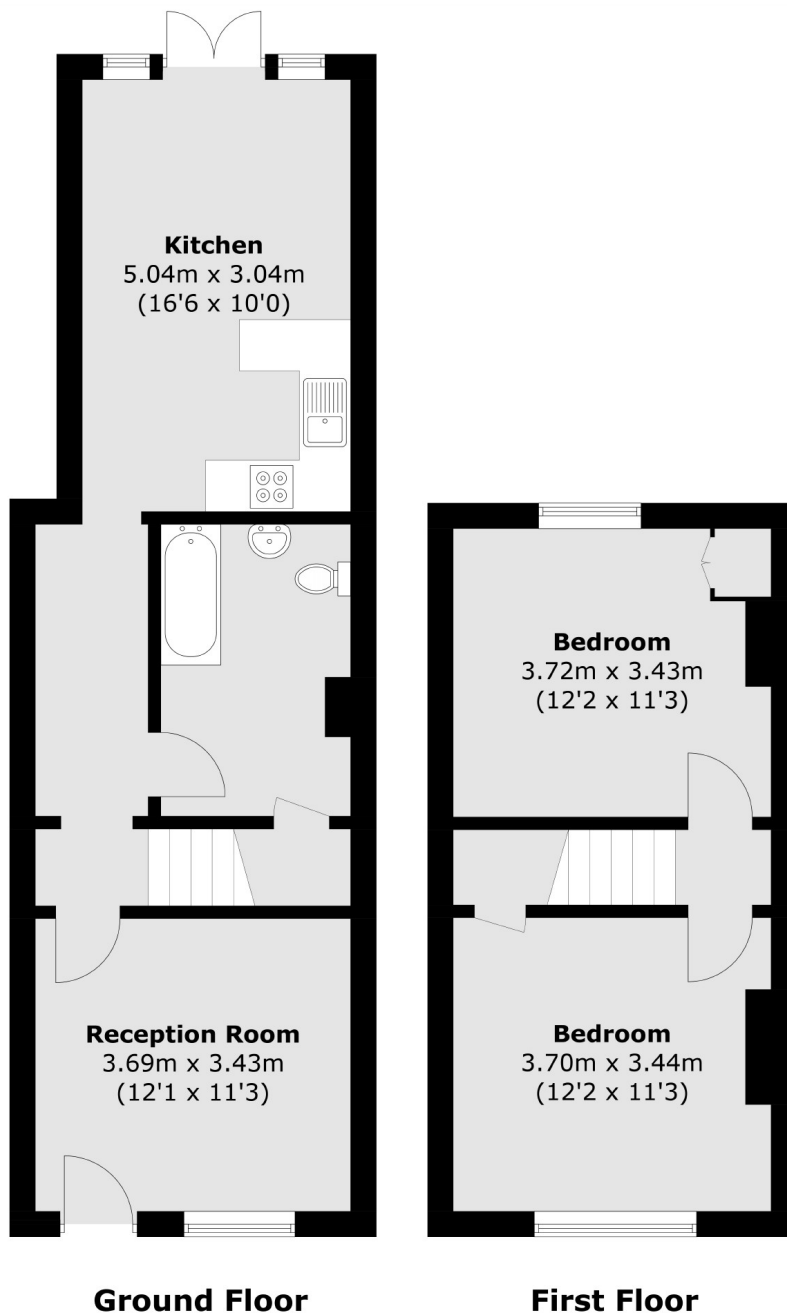
A charming Victorian house set within a popular residential road in Kingston. Internally, the house has 820sq ft of living space set over two floors and boasts a generously sized private rear garden, with no onward chain.

Bearfield Road is a quiet residential road moments away from local shops, cafes, bars, restaurants and excellent bus routes. Kingston and Norbiton mainline stations are both less than a mile away, as well as royal Richmond Park.

- Victorian • Two Double Bedrooms • Excellent Location •
- Private Garden • Great School Catchments • No Onward Chain •

SNELLERS

ESTATE AGENTS



Total area (approx.): 76.2 sq. m (820.2 sq. ft)

Snellers Teddington Sales
74 Broad Street
Teddington
TW11 8QX
020 8408 8040
teddingtonsales@snellers.co.uk

Energy Rating: C We aim to make our particulars both accurate and reliable. However they are not guaranteed; nor do they form part of an offer or contract. If you require clarification on any points then please contact us, especially if you're traveling some distance to view. Please note that appliances and heating systems have not been tested and therefore no warranties can be given as to their good working order