



## Manor Road, TW11

£599,950

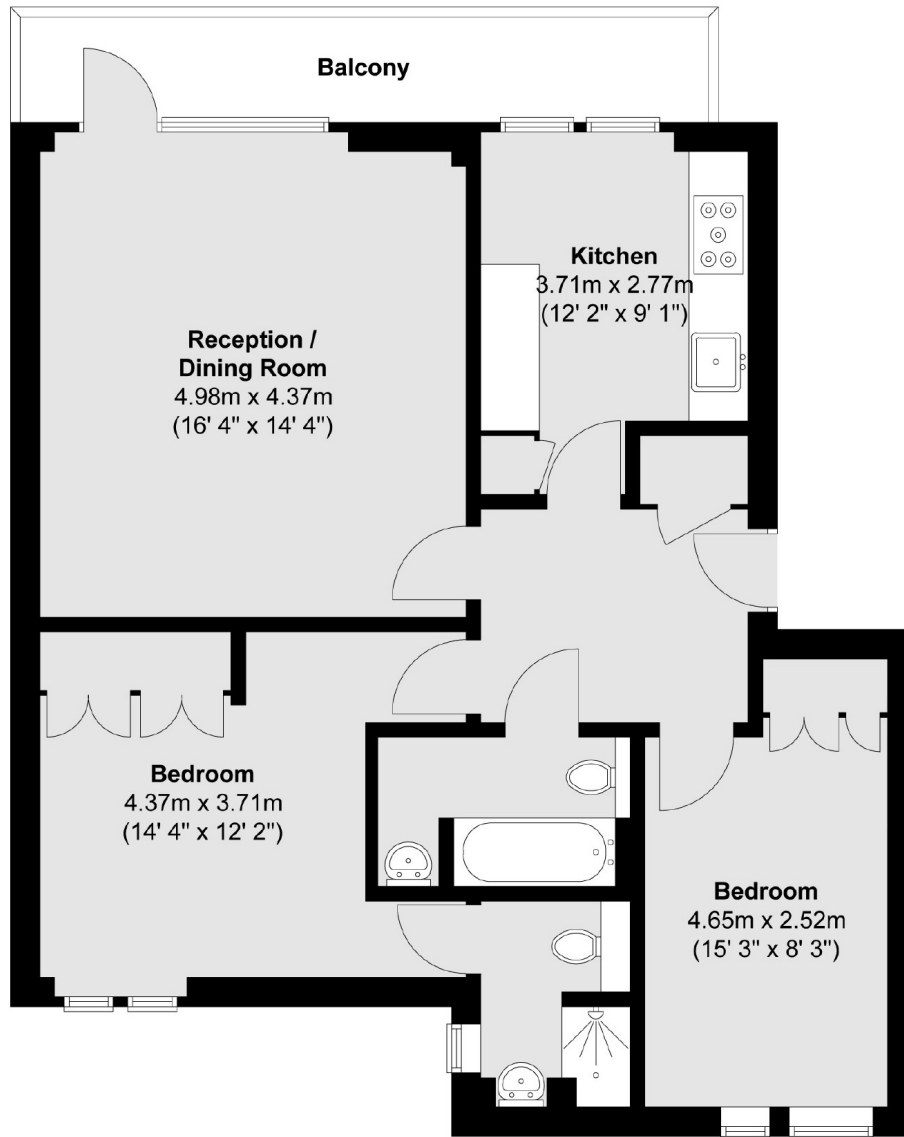
A beautifully presented apartment forming part of a stylish contemporary building, quietly situated close to Teddington Lock. The apartment offers over 800 sq ft of living space and has the advantage of underground parking, long private balcony and a separate secure storage unit.

The apartment is situated in an enviable location just moments from the river Thames. Teddington station with its service to London Waterloo is just 0.7 miles away and the excellent shops, bars and restaurants of the High Street are even closer.

- Large Reception Room • Superb Kitchen • Two Bedrooms •
- Two Bathrooms • South Facing Balcony • Underground Parking •
- Separate Secure Storage •

# SNELLERS

ESTATE AGENTS



Total area (approx.) : 74.8 sq. m (805 sq. ft)  
Total balcony area (approx.) : 7.2 sq. m (77 sq. ft)

Snellers Teddington Sales  
74 Broad Street  
Teddington  
TW11 8QX  
020 8408 8040  
teddingtonsales@snellers.co.uk

Energy Rating: C We aim to make our particulars both accurate and reliable. However they are not guaranteed; nor do they form part of an offer or contract. If you require clarification on any points then please contact us, especially if you're traveling some distance to view. Please note that appliances and heating systems have not been tested and therefore no warranties can be given as to their good working order