



Fife Road, KT1

£318,495

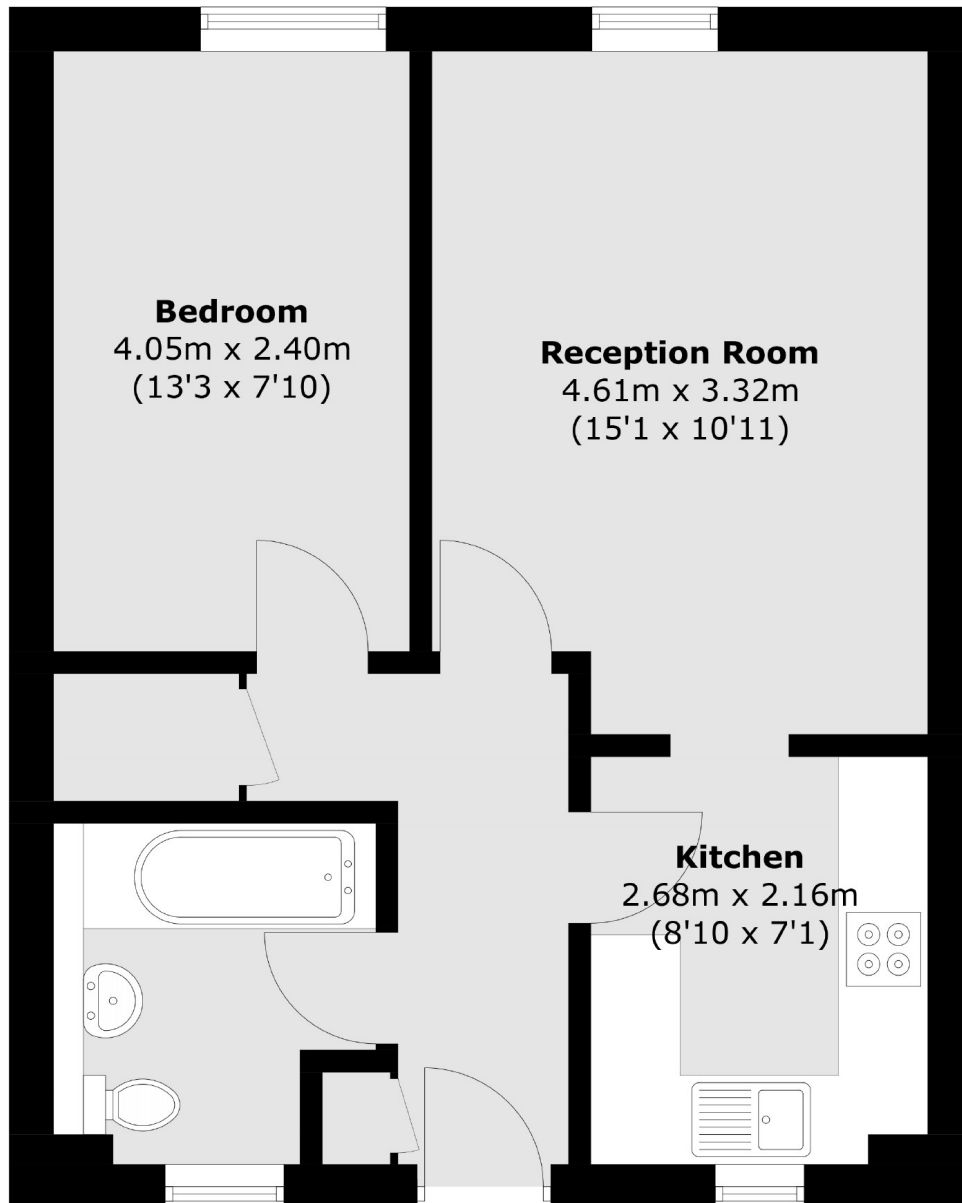
A fabulous, centrally located one bedroom apartment which has the advantage of reserved parking. This apartment offers almost 500 sq ft of living space.

This apartment is situated in the most fabulous central Kingston location. The station is just a few hundred metres away, and there is easy access to the shopping facilities and bars/restaurants with the river Thames also being close by.

- Reception Room • Double Bedroom • Fitted Kitchen •
- Bathroom • Reserved Parking •

SNELLERS

ESTATE AGENTS



Total area (approx.): 44.4 sq. m (477.9 sq. ft)

Snellers Teddington Sales
74 Broad Street
Teddington
TW11 8QX
020 8408 8040
teddingtonsales@snellers.co.uk

Energy Rating: C We aim to make our particulars both accurate and reliable. However they are not guaranteed; nor do they form part of an offer or contract. If you require clarification on any points then please contact us, especially if you're traveling some distance to view. Please note that appliances and heating systems have not been tested and therefore no warranties can be given as to their good working order