

SNELLERS

ESTATE AGENTS



Victoria Road, KT1

£500,000

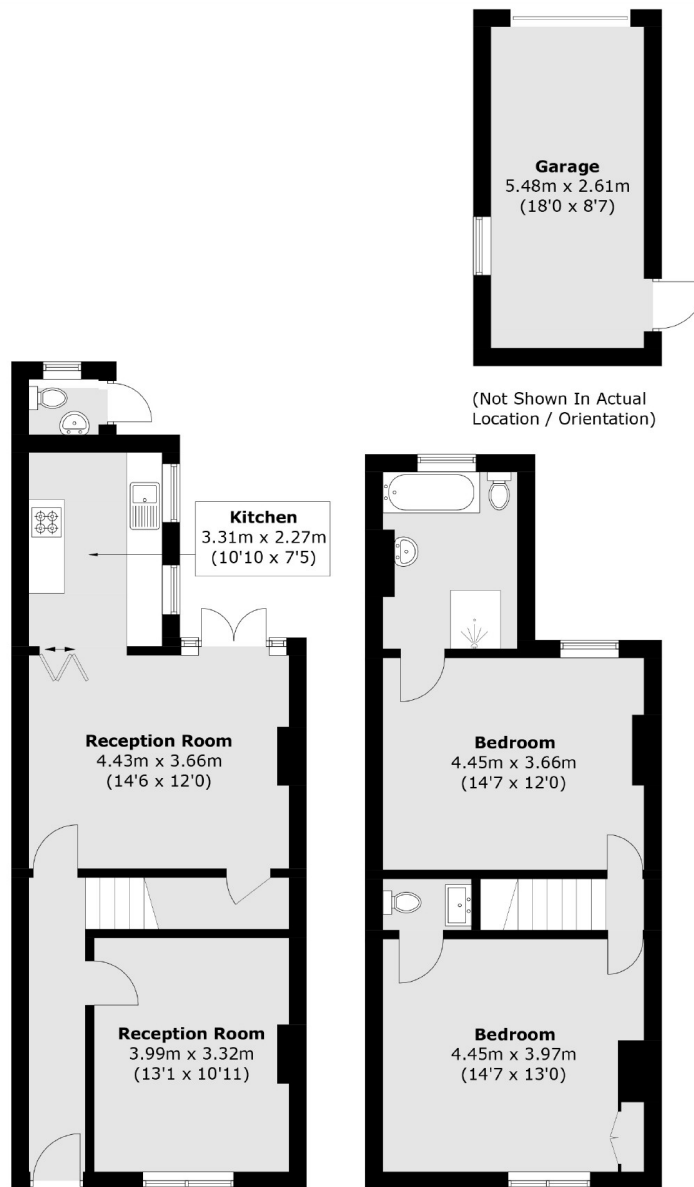
A truly charming two bedroom end-terraced cottage situated in a fabulous residential street. This house offers over 1,000 sq ft of living space over two floors and has the advantage of both a garage and no forward chain.

This house is situated in a quiet residential street, close to Norbiton station. The fabulous shopping centre of Kingston is just over half a mile away and the station is close too.

- Two Receptions • Two Bedrooms • Upstairs Bathroom •
- Private Garden • Garage • No Chain •

SNELLERS

ESTATE AGENTS



Ground Floor

First Floor

Total area (approx.): 93.5 sq. m (1006.5 sq. ft)

Garage : 14.4 sq. m (155.0 sq. ft)

External WC : 1.2 sq. m (12.9 sq. ft)

Snellers Teddington Sales
74 Broad Street
Teddington
TW11 8QX
020 8408 8040
teddingtonsales@snellers.co.uk

Energy Rating: We aim to make our particulars both accurate and reliable. However they are not guaranteed; nor do they form part of an offer or contract. If you require clarification on any points then please contact us, especially if you're traveling some distance to view. Please note that appliances and heating systems have not been tested and therefore no warranties can be given as to their good working order