

SNELLERS

ESTATE AGENTS



Holmesdale Road, TW11

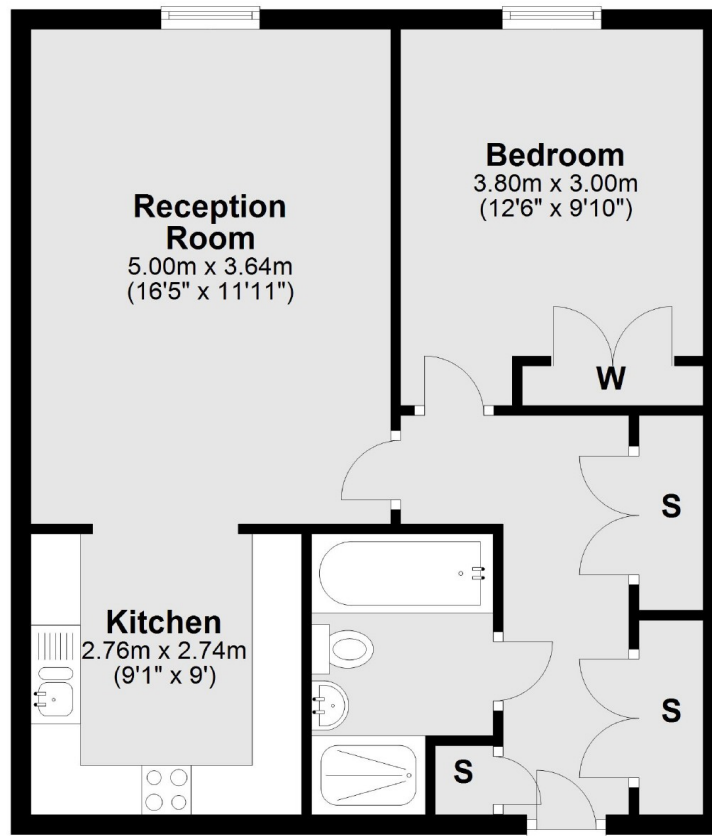
£1,375 PCM

A well presented ground floor one bedroom apartment surrounded by stunning communal gardens. The property benefits from high ceilings, allocated parking, the use of a residents gymnasium and good storage throughout.

Oak House is one of three residential blocks off Holmesdale Road, forming part of the Landgon Park Development. Surrounded by stunning communal gardens and within easy reach of both Kingston and Teddington Town centres.

- Ground Floor • Four Piece Bathroom • Ample Kitchen Storage •
- Lovely High Ceilings • Allocated Parking • Communal Gardens •

Ground Floor



Total area: approx. 54.0 sq. metres (581.2 sq. feet)

Snellers Teddington Lettings
74 Broad Street
Teddington
TW11 8QX
020 8614 6140
teddingtonlettings@snellers.co.uk

Energy Rating: C We aim to make our particulars both accurate and reliable. However they are not guaranteed; nor do they form part of an offer or contract. If you require clarification on any points then please contact us, especially if you're traveling some distance to view. Please note that appliances and heating systems have not been tested and therefore no warranties can be given as to their good working order