

SNELLERS

ESTATE AGENTS



Broom Park, TW11

£525,000

A truly wonderful apartment forming part of a popular riverside development. This apartment offers over 900 sq ft of well presented living space, a garage, communal gardens and river views from almost every room. This apartment also has no chain.



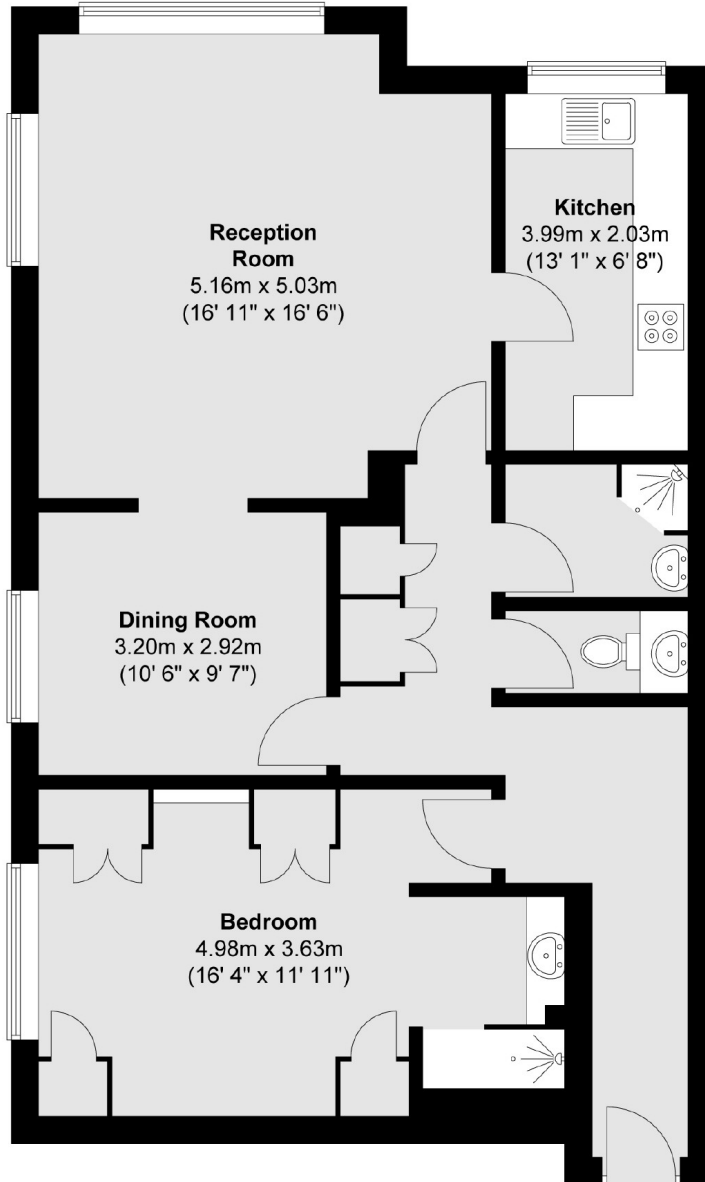
Broom Park is a popular development situated adjacent to the River Thames and is just half a mile walk from Hampton Wick station and the extensive shopping centre of Kingston just a short distance further.

- Large Reception Room • Two Double Bedrooms • Fitted Kitchen •
- Bathroom • Garage • No Chain •



SNELLERS

ESTATE AGENTS



Total area (approx.) : 85.1 sq. m (916 sq. ft)

Snellers Teddington Sales
74 Broad Street
Teddington
TW11 8QX
020 8408 8040
teddingtonsales@snellers.co.uk

Energy Rating: C We aim to make our particulars both accurate and reliable. However they are not guaranteed; nor do they form part of an offer or contract. If you require clarification on any points then please contact us, especially if you're traveling some distance to view. Please note that appliances and heating systems have not been tested and therefore no warranties can be given as to their good working order