

SNELLERS

ESTATE AGENTS



Park Road, KT1

£385,000

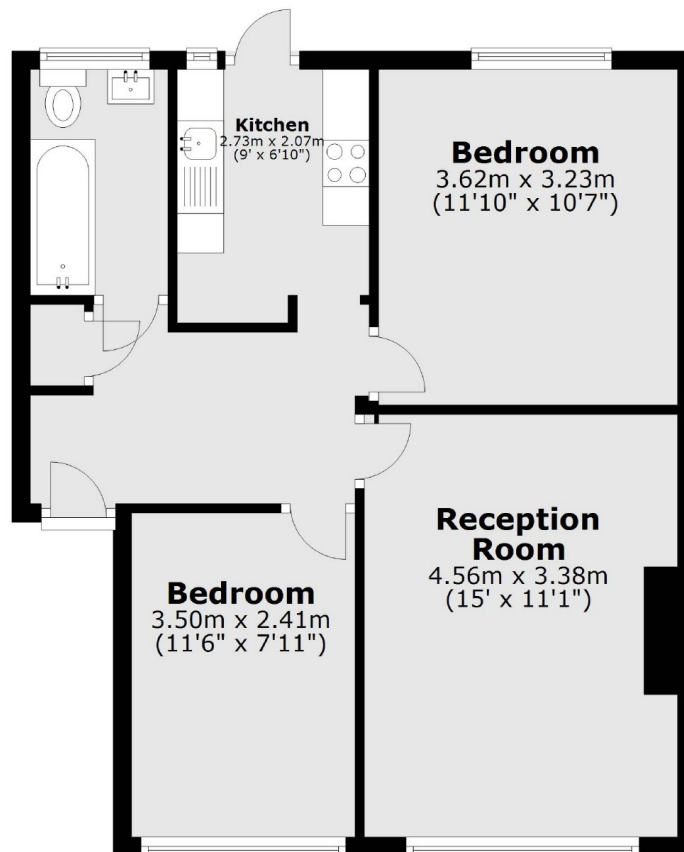
A light and airy two double bedroom ground floor apartment forming part of a popular development surrounded by communal gardens. The apartment offers almost 600 sq.ft of well presented living space with direct access to gardens.

The apartment is situated in a popular cul-de-sac opposite access to Royal Bushy Park. Hampton Wick station is just 400m away and Kingston town centre with its fantastic shops and restaurants just a little further.

- Two Bedrooms • Residents Permit Parking • Ground Floor •
- Well Equipped Kitchen • Communal Gardens • Art Deco •

SNELLERS

ESTATE AGENTS



Total area: approx. 53.9 sq. metres (579.9 sq. feet)

Snellers Teddington Sales
74 Broad Street
Teddington
TW11 8QX
020 8408 8040
teddingtonsales@snellers.co.uk

Energy Rating: C We aim to make our particulars both accurate and reliable. However they are not guaranteed; nor do they form part of an offer or contract. If you require clarification on any points then please contact us, especially if you're traveling some distance to view. Please note that appliances and heating systems have not been tested and therefore no warranties can be given as to their good working order