

# SNELLERS

ESTATE AGENTS



**Connaught Road, TW11**

**£4,000 PCM**

A truly stunning four bedroom Victorian family home that has been refurbished and restored to the highest standard throughout, combining period features with contemporary design.



The ground floor comprises a double aspect reception room that leads onto a modern high specification kitchen with bi-folding doors framing a pretty garden.

Upstairs does not disappoint either, with two great size double bedrooms, a further bedroom/study and a stylish bathroom.

Head upstairs again to another beautifully decorated double bedroom benefiting from an en suite. This property is picture perfect leaving you very little to do but unpack and enjoy.

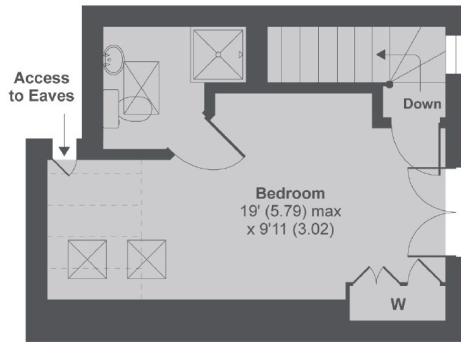
Connaught Road runs between Wellington Road and Anlaby Road, just over half a mile walk from Fulwell Station and also a short distance from a pedestrian gate to the beautiful Bushy Park.

- Four Bedrooms • Downstairs WC • High Specification •
- Open Plan Kitchen • Period Features • Great Location •



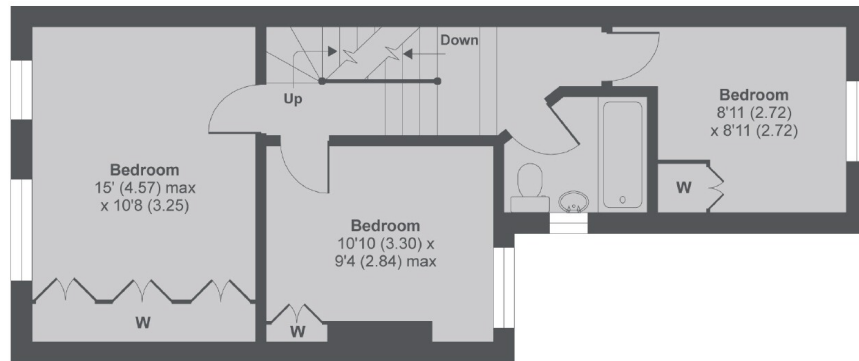
# SNELLERS

ESTATE AGENTS

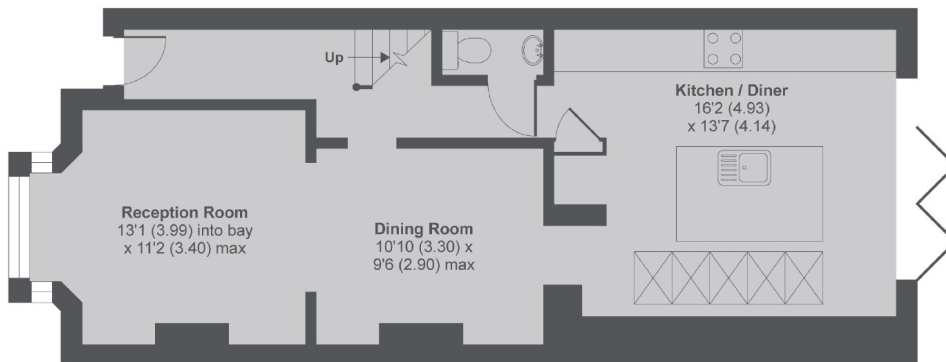


2nd Floor

Denotes restricted  
head height



1st Floor



Ground Floor

## Connaught Road TW11

MAIN HOUSE APPROX FLOOR AREA 1278 SQ.FT 118.7 SQ.M (INCLUDES RESTRICTED HEAD HEIGHT)

Copyright nichecom.co.uk 2017 Produced for Snellers REF : 205900

Snellers Teddington Lettings  
74 Broad Street  
Teddington  
TW11 8QX  
020 8614 6140  
teddingtonlettings@snellers.co.uk

Energy Rating: C We aim to make our particulars both accurate and reliable. However they are not guaranteed; nor do they form part of an offer or contract. If you require clarification on any points then please contact us, especially if you're traveling some distance to view. Please note that appliances and heating systems have not been tested and therefore no warranties can be given as to their good working order