

# SNELLERS

ESTATE AGENTS



**Princes Road, TW11**

**£1,095,000**

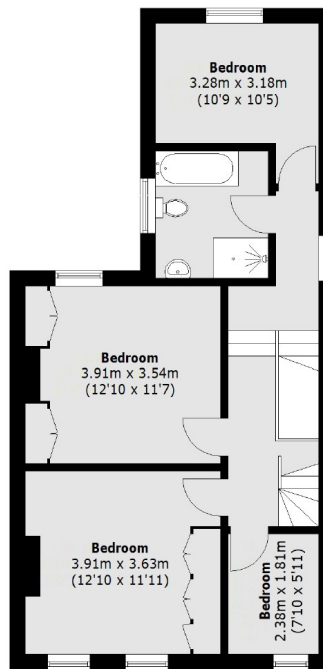
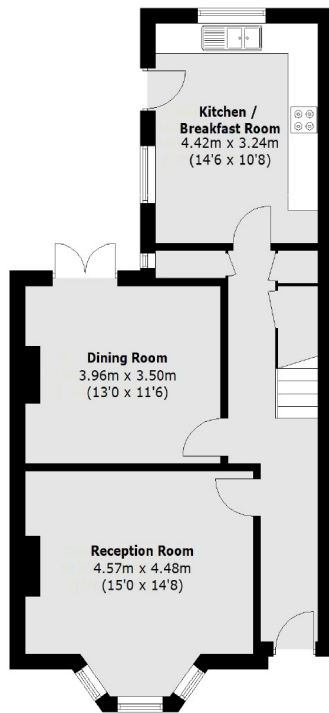
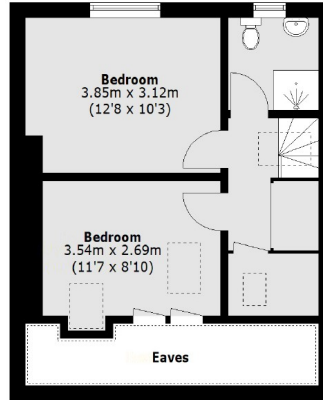
A fabulous six bedroom Victorian period family home, situated in a popular tree-lined residential street. The house offers almost 1,700 sq.ft of living space over three floors and offers the added benefit of no forward chain.

Princes Road is one of the Royal Roads in Teddington. The house is just half a mile from Fulwell station and less than a mile from Teddington station. The area is well served by highly regarded state schools with St.Mary's & St. Peters round the corner.

- Six Bedrooms • Two Bathrooms • Two Receptions •
- Kitchen/Breakfast Room • Pretty Garden • No Forward Chain •

# SNELLERS

ESTATE AGENTS



Ground Floor

First Floor

Total area (approx.): 155.8 sq. m (1,677.0 sq. ft)  
(Excluding Eaves)

Snellers Teddington Sales  
74 Broad Street  
Teddington  
TW11 8QX  
020 8408 8040  
teddingtonsales@snellers.co.uk

Energy Rating: E We aim to make our particulars both accurate and reliable. However they are not guaranteed; nor do they form part of an offer or contract. If you require clarification on any points then please contact us, especially if you're traveling some distance to view. Please note that appliances and heating systems have not been tested and therefore no warranties can be given as to their good working order