

SNELLERS

ESTATE AGENTS



Charter Road, KT1

£615,000

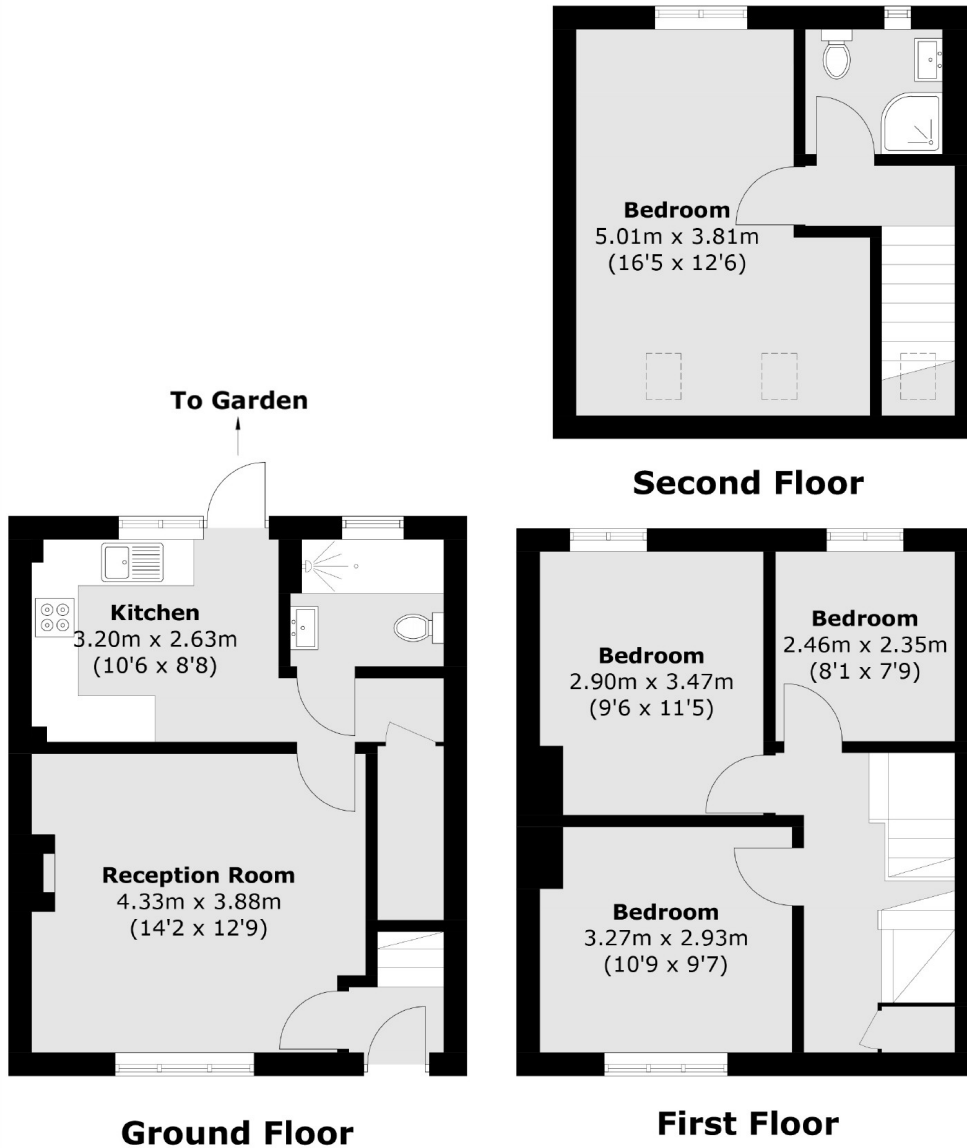
A fabulous four bedroom family house situated in a popular residential street. The house offers over 1,000 sq ft of living space set over three floors, has a great size garden, off-street parking and no forward chain.

This house is located just 0.5 miles from Norbiton station with its service to Waterloo, and there are local shops and bus routes almost on your doorstep. The fantastic shopping facilities of Kingston town centre are just a mile away and there is access to the River Thames too.

- Four Bedrooms • Two Bathrooms • Reception Room •
- Private Garden • Off-Street Parking • No Chain •

SNELLERS

ESTATE AGENTS



Total area (approx.): 95.4 sq. m (1,026.8 sq. ft)

Snellers Teddington Sales
74 Broad Street
Teddington
TW11 8QX
020 8408 8040
teddingtonsales@snellers.co.uk

Energy Rating: D We aim to make our particulars both accurate and reliable. However they are not guaranteed; nor do they form part of an offer or contract. If you require clarification on any points then please contact us, especially if you're traveling some distance to view. Please note that appliances and heating systems have not been tested and therefore no warranties can be given as to their good working order