

SNELLERS

ESTATE AGENTS



St. Mark's Hill, KT6

£575,000

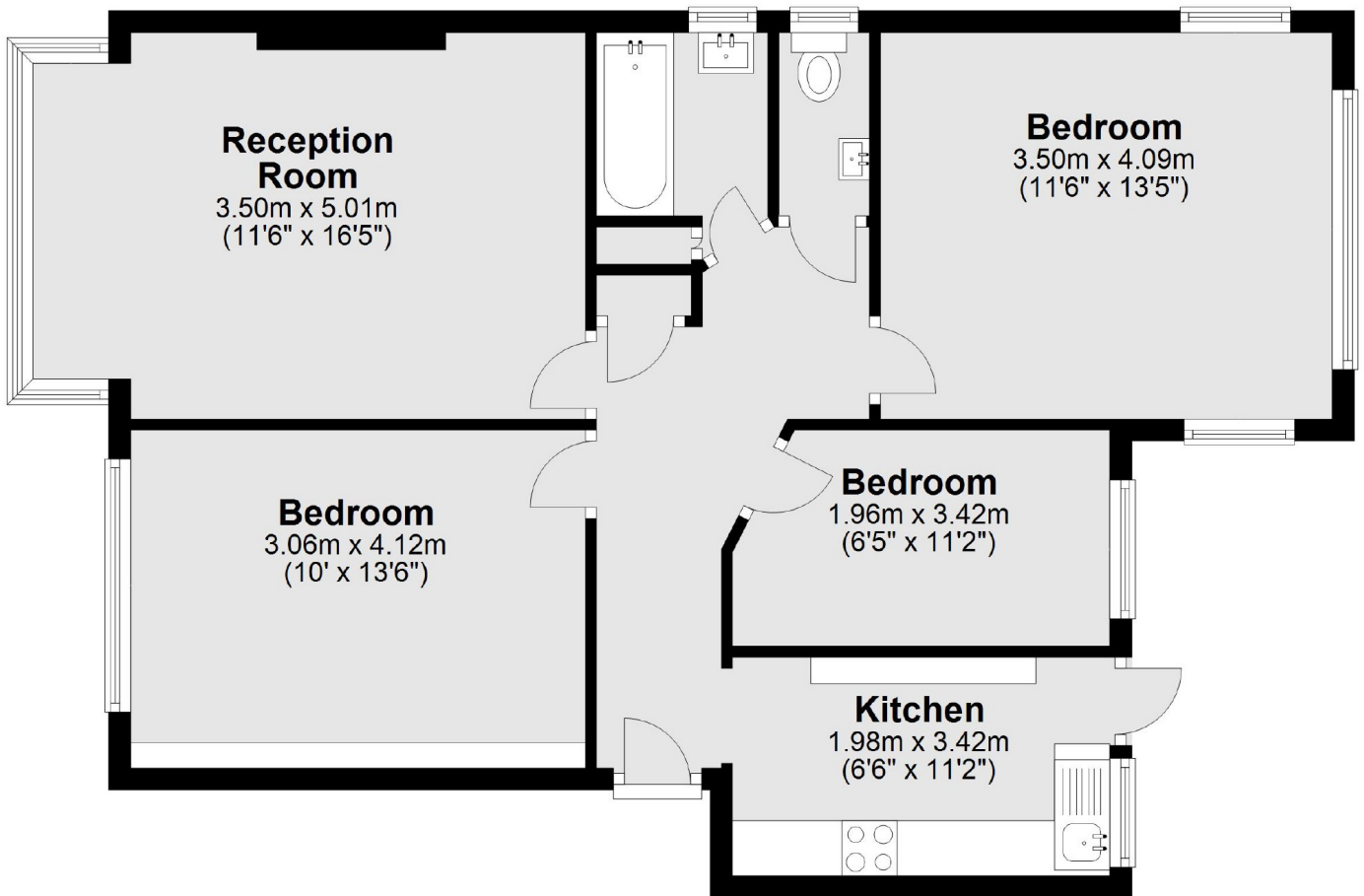
A fabulous three bedroom apartment forming part of a handsome double fronted building on the lower slopes of Surbiton Hill. The apartment offers almost 800 sqft of living space and has the advantage of both a large communal garden and off-street parking.

The apartment is situated just 200 metres from Surbiton station with it's fast service to London Waterloo. Surbiton town centre has a fantastic range of boutique bars, shops and restaurants and the River Thames is very close by.

- Three Bedrooms • Large Reception Room • Surbiton Hill •
- Communal Gardens • Off-Street Parking •

SNELLERS

ESTATE AGENTS



Total area: approx. 72.0 sq. metres (775.0 sq. feet)

Snellers Teddington Sales
74 Broad Street
Teddington
TW11 8QX
020 8408 8040
teddingtonsales@snellers.co.uk

Energy Rating: C We aim to make our particulars both accurate and reliable. However they are not guaranteed; nor do they form part of an offer or contract. If you require clarification on any points then please contact us, especially if you're traveling some distance to view. Please note that appliances and heating systems have not been tested and therefore no warranties can be given as to their good working order