

SNELLERS

ESTATE AGENTS



Royal Road, TW11

£5,200 PCM

This rarely available and beautifully presented double fronted Victorian home has versatile living space in excess of 2,300 sq.ft generously spread over three floors.



The downstairs has flexible living space comprising of two large front reception rooms both with feature fireplaces, a modern kitchen leading onto a separate dining room, study/playroom, utility room and cloakroom.

On the first floor there are three generous double bedrooms and a smaller fourth room perfect as a nursery or dressing room along with a family bathroom. The top floor has a lovely master bedroom with a unique mezzanine level and shower room.

There is a great sized garden with patio area perfect for outdoor dining, a basement for storage and converted garage area ideal for storing bikes.

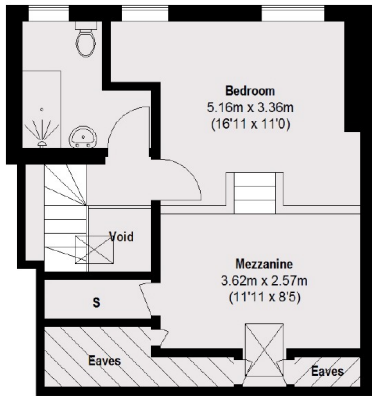
The house is situated just 0.5 miles from Fulwell station and 0.9 miles from Teddington station with local bus routes and shops even closer to hand. Pedestrian access to Royal Bushy Park is just 0.3 miles away and the house is well located for highly regarded local schools.

- Double Fronted Home • Easy Street Parking • Large Master Bedroom •
- Original Character Features • Dual Aspect Bedroom • Versatile Living Space •

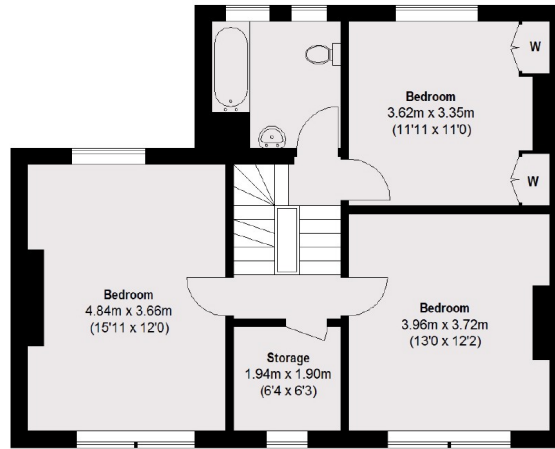


SNELLERS

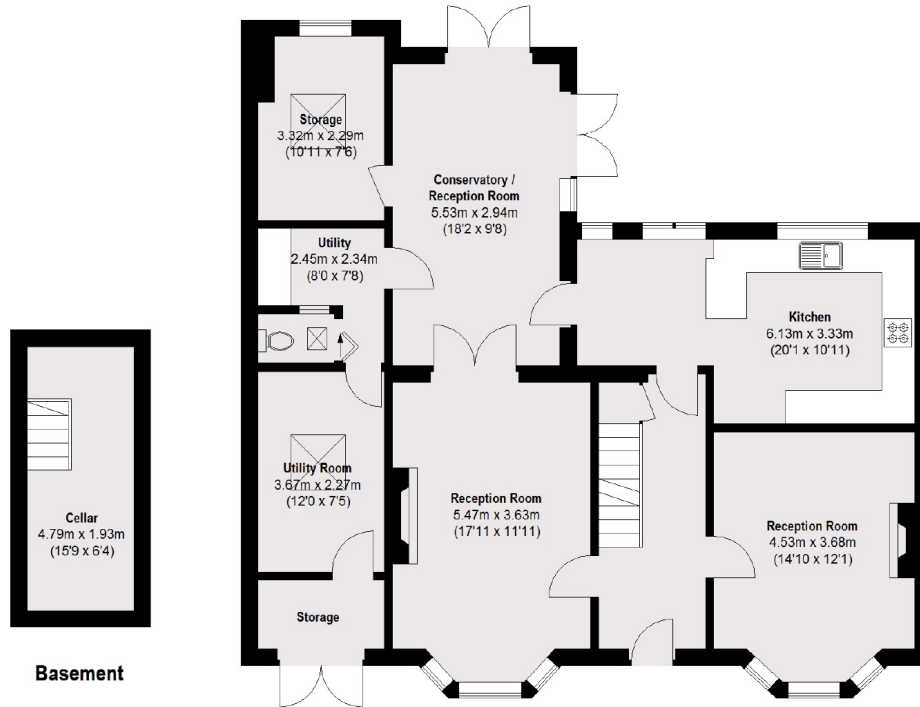
ESTATE AGENTS



Second Floor



First Floor



Basement

Ground Floor

Total area (approx.): (Excluding Eaves / Void)
216.42 sq. m (2330 sq. ft)

Snellers Teddington Lettings
74 Broad Street
Teddington
TW11 8QX
020 8614 6140
teddingtonlettings@snellers.co.uk

Energy Rating: E We aim to make our particulars both accurate and reliable. However they are not guaranteed; nor do they form part of an offer or contract. If you require clarification on any points then please contact us, especially if you're traveling some distance to view. Please note that appliances and heating systems have not been tested and therefore no warranties can be given as to their good working order