

# SNELLERS

ESTATE AGENTS



## Langdon Park, TW11

£2,550 PCM

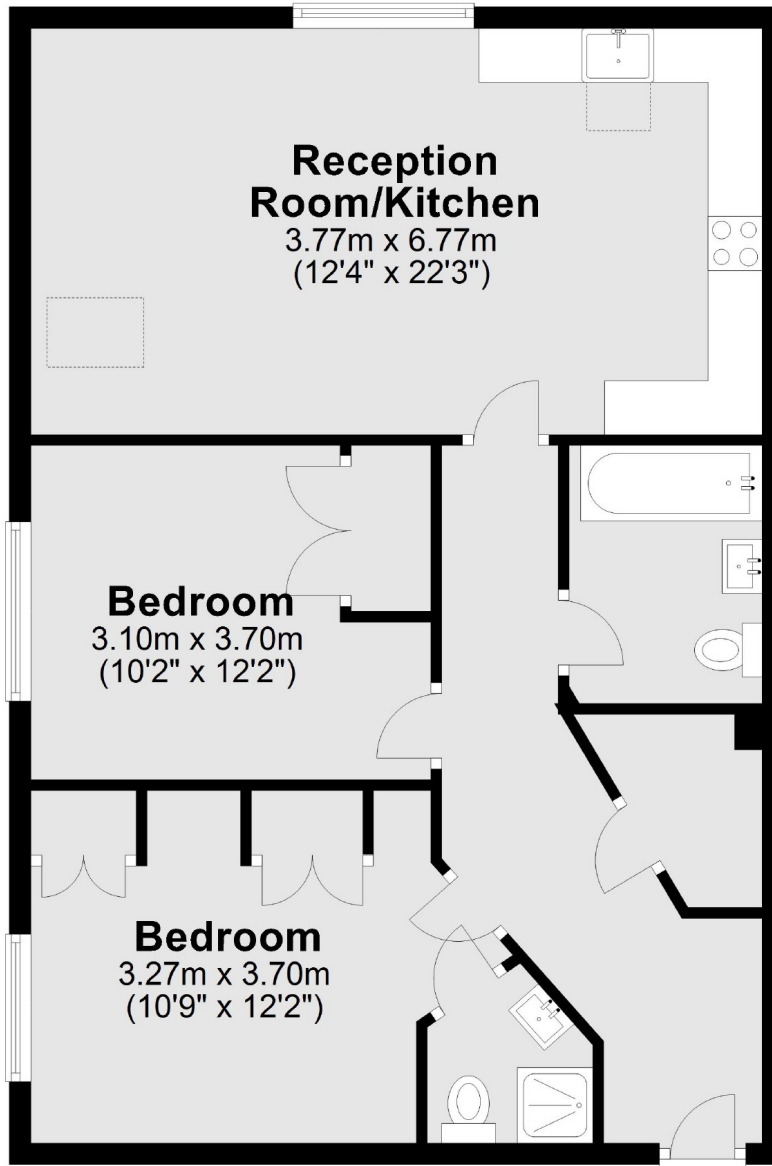
An executive two bedroom, two bathroom apartment set within the much sought after Langdon Park development located close to local amenities and a short distance to Hampton Wick station.

The Langdon Park development is set within extensive communal grounds a short walk from Hampton Wick Station with its frequent services to Waterloo and both Teddington Lock and Bushy Park are nearby.

- Two Double Bedrooms • Two Bathrooms • Landscaped Gardens •
- One Allocated Parking Space • On Site Gym • Central Location •

# SNELLERS

ESTATE AGENTS



Total area: approx. 70.0 sq. metres (753.0 sq. feet)

Snellers Teddington Lettings  
74 Broad Street  
Teddington  
TW11 8QX  
020 8614 6140  
teddingtonlettings@snellers.co.uk

Energy Rating: B We aim to make our particulars both accurate and reliable. However they are not guaranteed; nor do they form part of an offer or contract. If you require clarification on any points then please contact us, especially if you're traveling some distance to view. Please note that appliances and heating systems have not been tested and therefore no warranties can be given as to their good working order