

SNELLERS

ESTATE AGENTS



Admiralty Way, TW11

£3,200 PCM

A newly decorated four bedroom Townhouse with views of Bushy Park. The house has a large kitchen/breakfast room perfect for socialising and hosting dinner parties with French doors onto a decked courtyard garden.



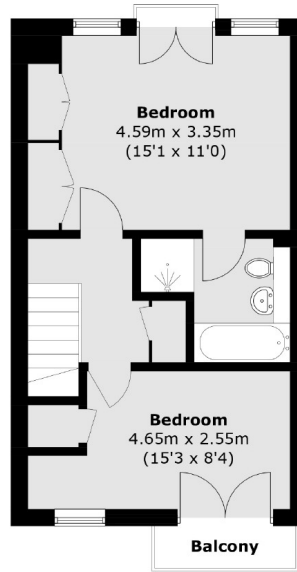
Admiralty Way is in a private estate adjacent to Bushy Park, located under half a mile from Teddington Train Station and the High Street.

- Three/Four Bedrooms • Private Parking • Two Bathrooms •
- Garden • Close to Bushy Park • Close to Train Station •

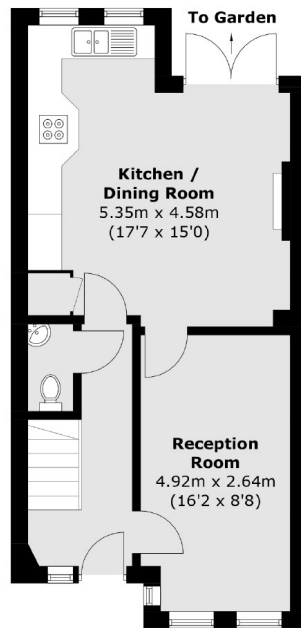


SNELLERS

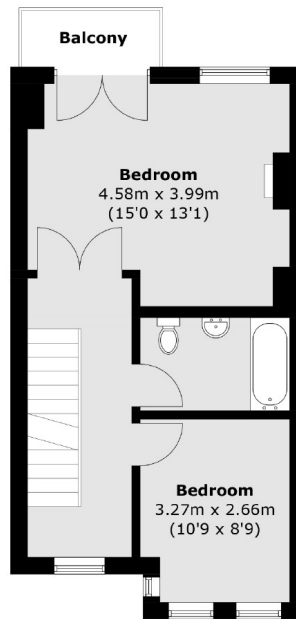
ESTATE AGENTS



Second Floor



Ground Floor



First Floor

Total area (approx.): 124.6 sq. m (1,341.2 sq. ft)
Balcony (approx.): 4.3 sq. m (46.3 sq. ft)

Snellers Teddington Lettings
74 Broad Street
Teddington
TW11 8QX
020 8614 6140
teddingtonlettings@snellers.co.uk

Energy Rating: We aim to make our particulars both accurate and reliable. However they are not guaranteed; nor do they form part of an offer or contract. If you require clarification on any points then please contact us, especially if you're traveling some distance to view. Please note that appliances and heating systems have not been tested and therefore no warranties can be given as to their good working order