

SNELLERS

ESTATE AGENTS



School House Lane, TW11

£799,950

A beautifully presented three bedroom, Victorian cottage situated in a charming cul-de-sac location close to Teddington. The house offers almost 900 sq.ft of living space set over three floors and has a courtyard rear garden.



On the ground floor there is an entrance hall leading into the double reception room. This is an elegant room and has a sash window with shutters to the front and a period cast Iron fireplace. There are fitted alcove cupboards here and plenty of space for a dining table & chairs. The recently re-fitted kitchen is at the rear of the house and has a range of painted 'Shaker style' units and stone countertops. There is a high vaulted ceiling with skylight windows, and a glazed door onto the rear garden.

On the first floor, there are two bedrooms, both of which have fitted wardrobes and there is a full bathroom. On the top floor there is a spacious principal room with built-in eaves cupboards.

Externally there is a delightful courtyard style rear garden, which has decking and there is a built-in shed.

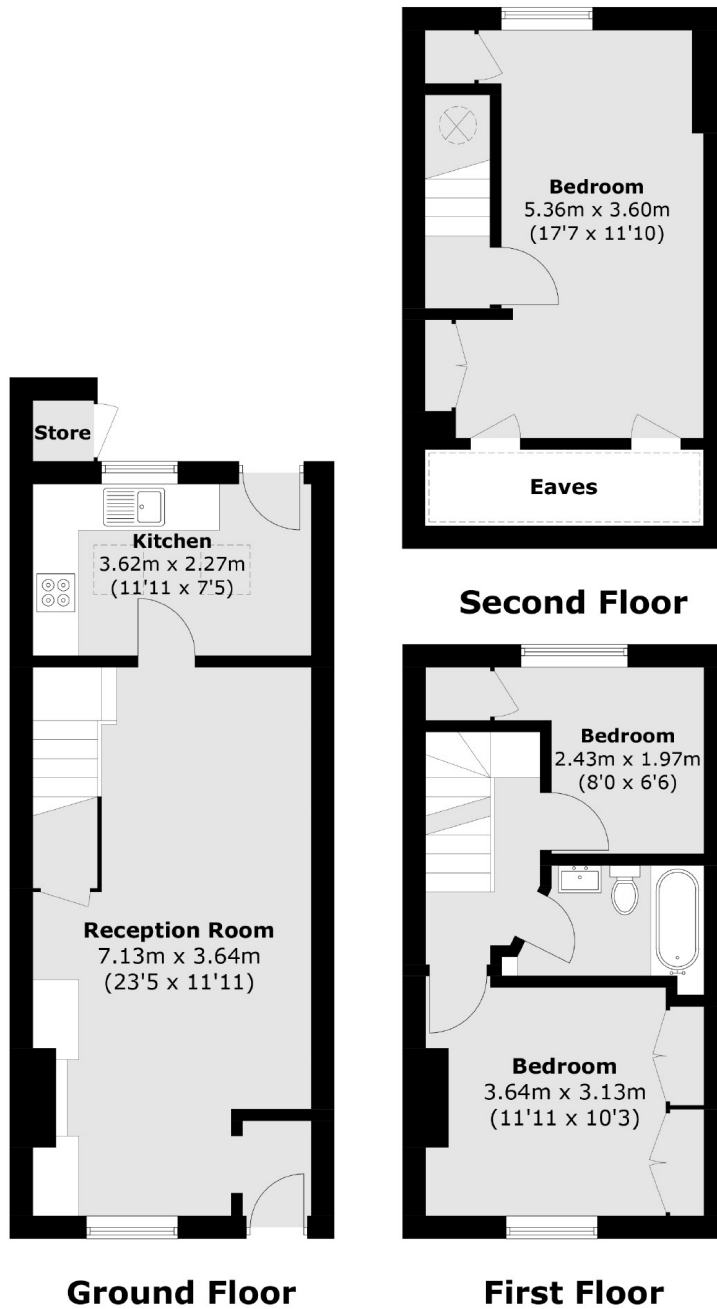
The house is in a fabulous location just 300m from access to Royal Bushy Park and 700m from Hampton Wick station. There are highly regarded schools nearby including Ofsted outstanding rated Collis Primary School, and there is easy access to Kingston town centre.

- Double Reception Room • Fantastic kitchen • Three Bedrooms •
- Family Bathroom • Courtyard Garden •



SNELLERS

ESTATE AGENTS



Total area (approx.): 82.0 sq. m (882.4 sq. ft)

Snellers Teddington Sales
74 Broad Street
Teddington
TW11 8QX
020 8408 8040
teddingtonsales@snellers.co.uk

Energy Rating: D We aim to make our particulars both accurate and reliable. However they are not guaranteed; nor do they form part of an offer or contract. If you require clarification on any points then please contact us, especially if you're traveling some distance to view. Please note that appliances and heating systems have not been tested and therefore no warranties can be given as to their good working order