



Sutton Lane, TW3

£340,000

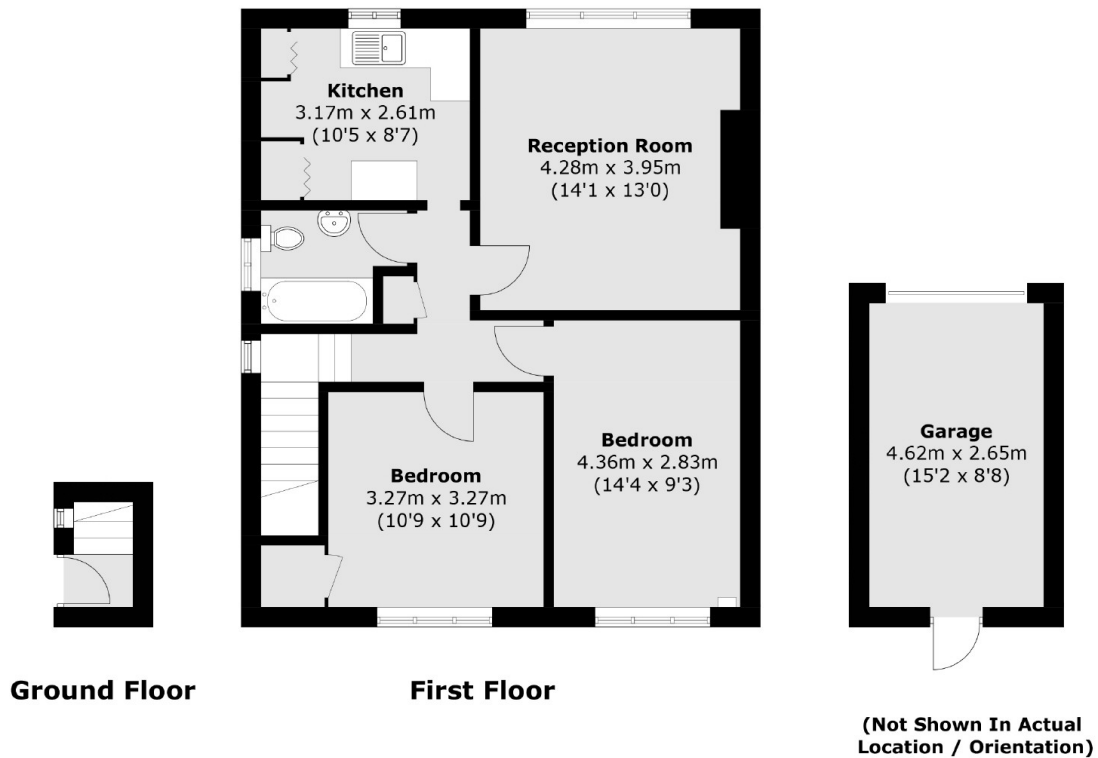
A well presented and spacious two double bedroom first floor maisonette which benefits from a lovely private rear garden. Further benefits include a large reception room with a separate kitchen, garage, long lease and parking available.

Conveniently situated within walking distance to Hounslow Central station (Picadilly line), local schools and parks. Hounslow High Street is nearby with an abundance of local shops and restaurants.

Features

- Two Double Bedrooms
- First Floor Maisonette
- Private Rear Garden & Garage
- Long Lease
- Ample Storage
- Close To Amenities

Sutton Lane, Hounslow, TW3



Total area (approx.): 65.5 sq. m (705 sq. ft)
Garage : 12.4 sq. m (133.5 sq. ft)