



Douglas Road, TW3

£199,950

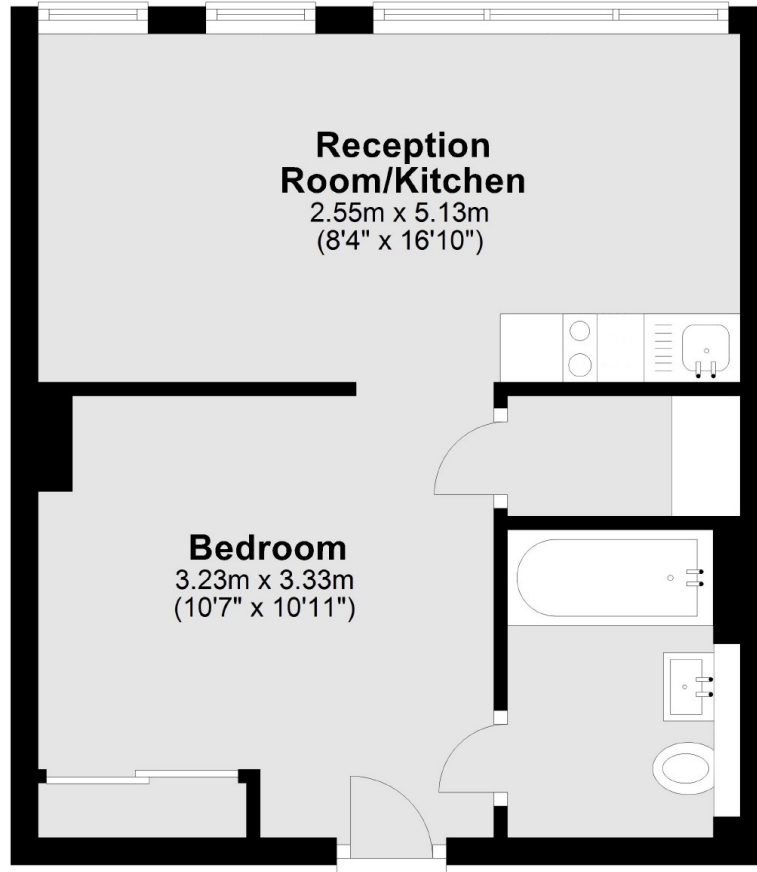
Beautiful studio flat located on the upper floors of a popular development, offering great views and lots of natural light. An ideal first time or investment purchase.

Superbly situated moments from the High Street offering great access to a number of shops and restaurants, as well as being a short distance to Hounslow East station (Piccadilly Line).

Features

Beautifully Presented
Studio Apartment
Gated Development
Lift Service
Close To Transport
Amenities Close By

Douglas Road, Hounslow, TW3



Total area: approx. 30.1 sq. metres (324.3 sq. feet)