



Samuelson Place, TW7

£400,000

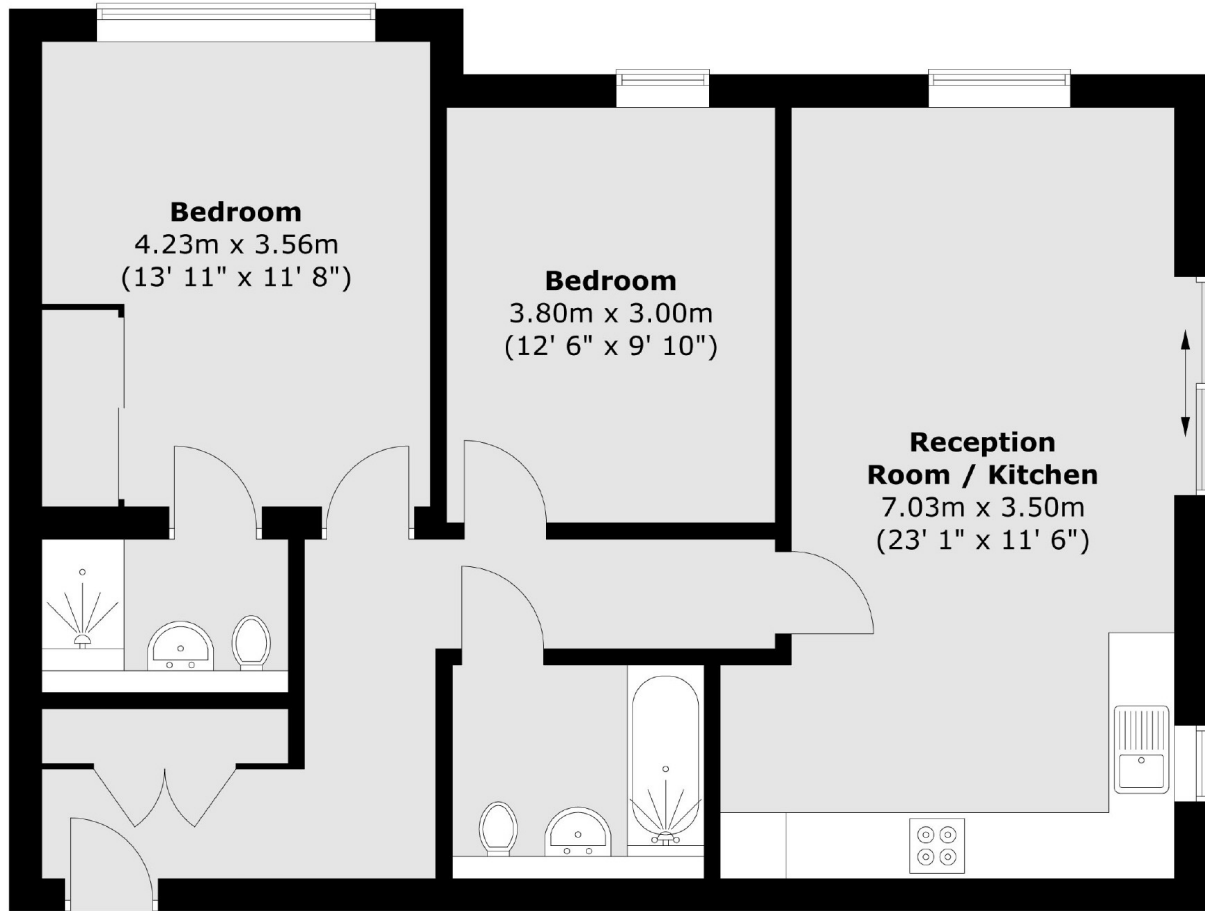
A beautifully presented luxury two double bedroom ground floor apartment, comprising of family bathroom, en-suite to the principle bedroom, generous living/dining space and fully integrated kitchen with appliances. Further benefits include direct access to a private patio garden, overlooking mature communal grounds. Allocated residents parking is also included.

Located in a modern development within a short walk of Thornbury Park and Isleworth train station. London Road offers a large selection of shops, restaurants and local amenities with easy access to the A4/M4 providing excellent routes into and out of the city centre.

Features

- Luxury Ground Floor Apartment
- Two Double Bedrooms
- Two Bathrooms
- Private Patio
- Parking
- New Build Warranty Remaining

Samuelson Place,
Isleworth, TW7



Total area (approx.) : 75.7 sq. m (815 sq. ft)