



Oak Lane, TW7

£449,950

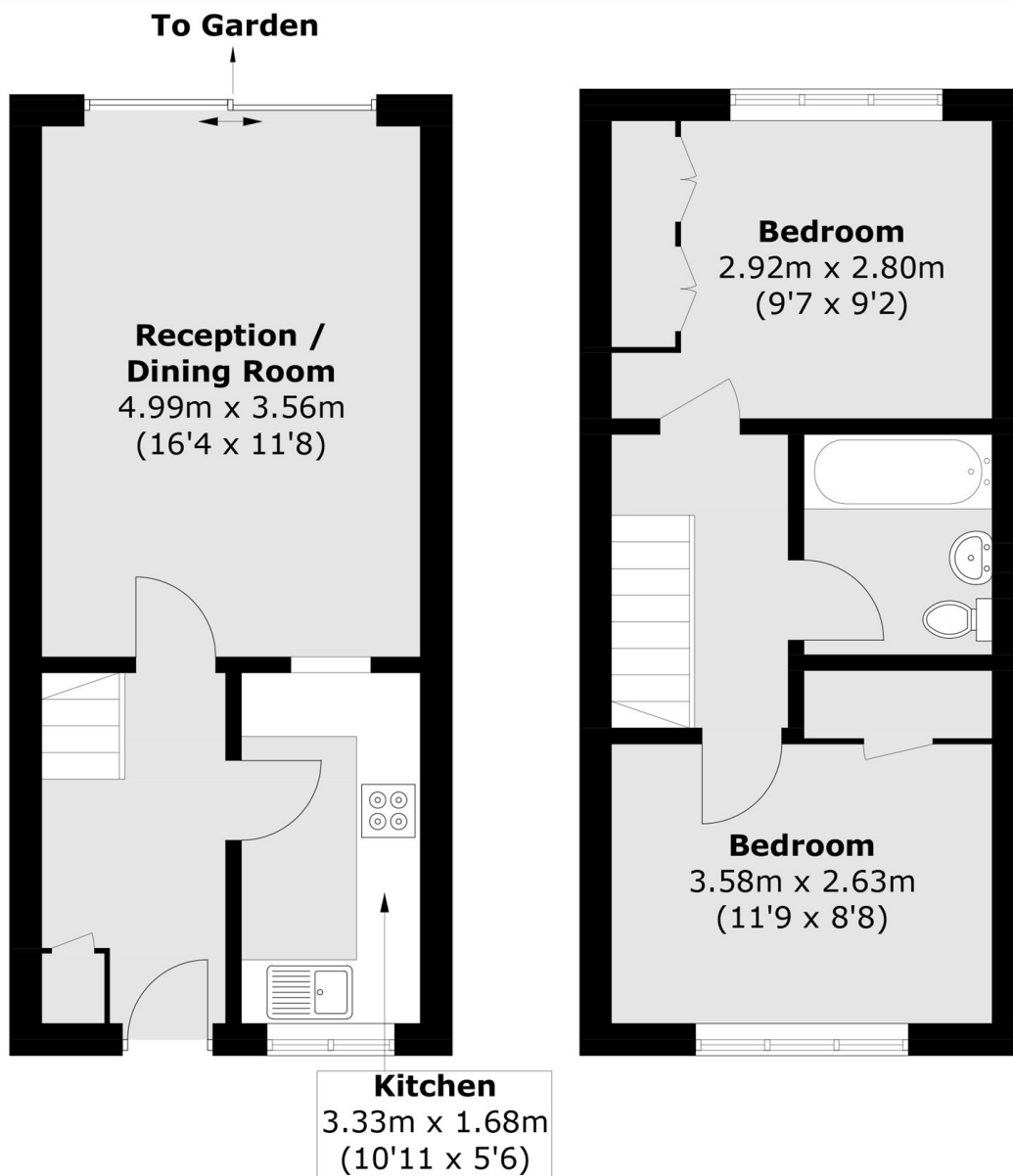
A beautifully presented two double bedroom mid terrace house. The property is immaculately presented throughout and benefits from private parking and gardens front and rear. The back garden is well planted, fenced in oak and paved with natural stone. There is potential to extend (STPP).

Oak Lane is conveniently located close to local amenities, parks and schools. Both Hounslow East (Piccadilly line) and Isleworth stations are nearby offering excellent transport links. Neighbouring areas of Twickenham, Richmond and St Margarets are also within easy reach.

Features

- Beautifully Presented
- Two Double Bedrooms
- Freehold House
- Private Garden
- Potential To Extend
- Residential Parking

Oak Lane,
Isleworth, TW7



Ground Floor

First Floor

Total area (approx.): 61.0 sq. m (656.6 sq. ft)