



Selbourne Avenue, TW3

£2,000 Per calendar month

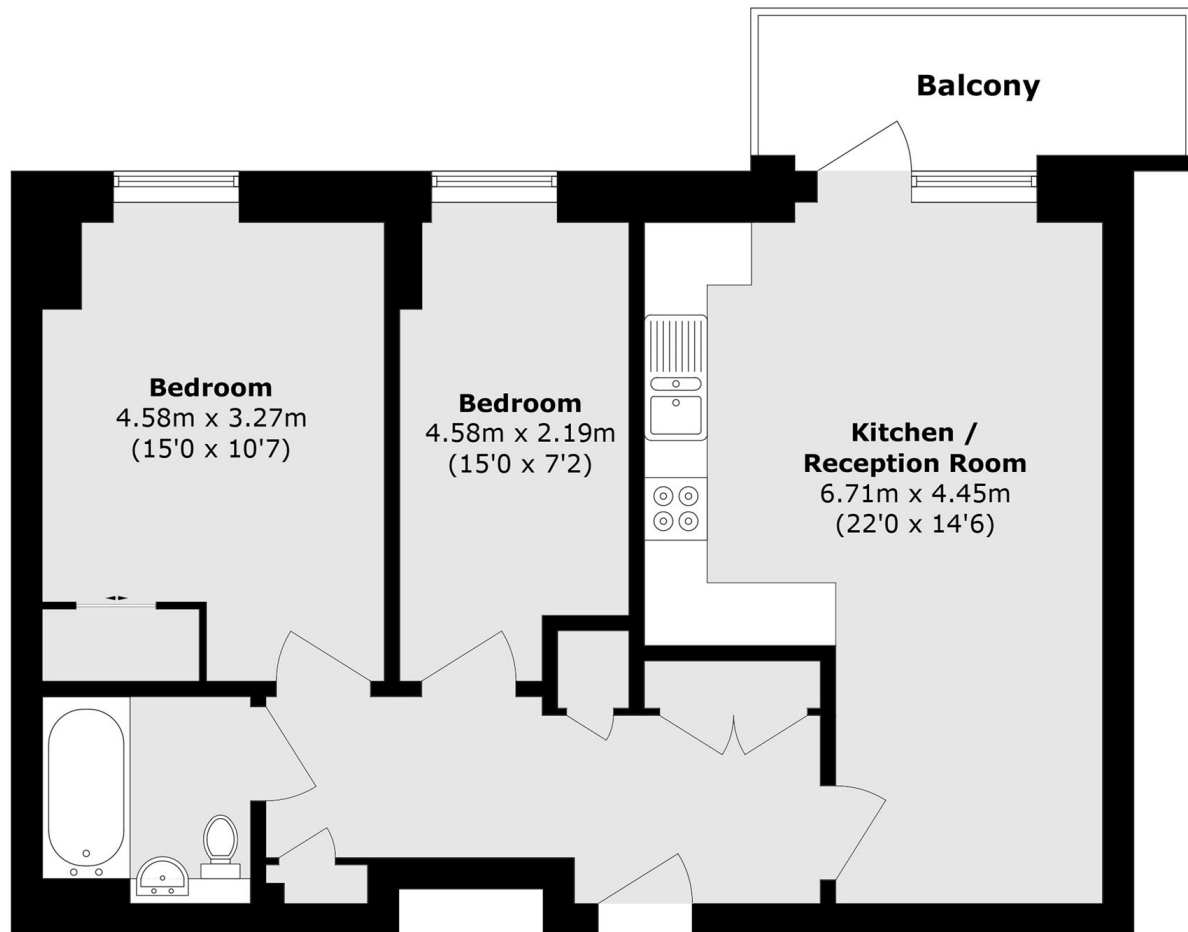
A beautifully presented two double bedroom apartment set in this new built development with a bright reception room, open plan kitchen, modern bathrooms and a private balcony.

Selbourne Avenue within easy walking distance to Hounslow East Tube (Piccadilly Line), Bus Garage and Isleworth Mainline Station.

Features

- New Build Development
- Two Double Bedroom
- Two Bathrooms
- Private Balcony
- Open Plan Kitchen
- Communal Courtyard

Selbourne Avenue,
Hounslow, TW3



Total area (approx.): 67.2 sq. m (723.3 sq. ft)

Balcony area (approx.): 6.1 sq. m (65.7 sq. ft)