



## Lynton Close, TW7

### £875,000

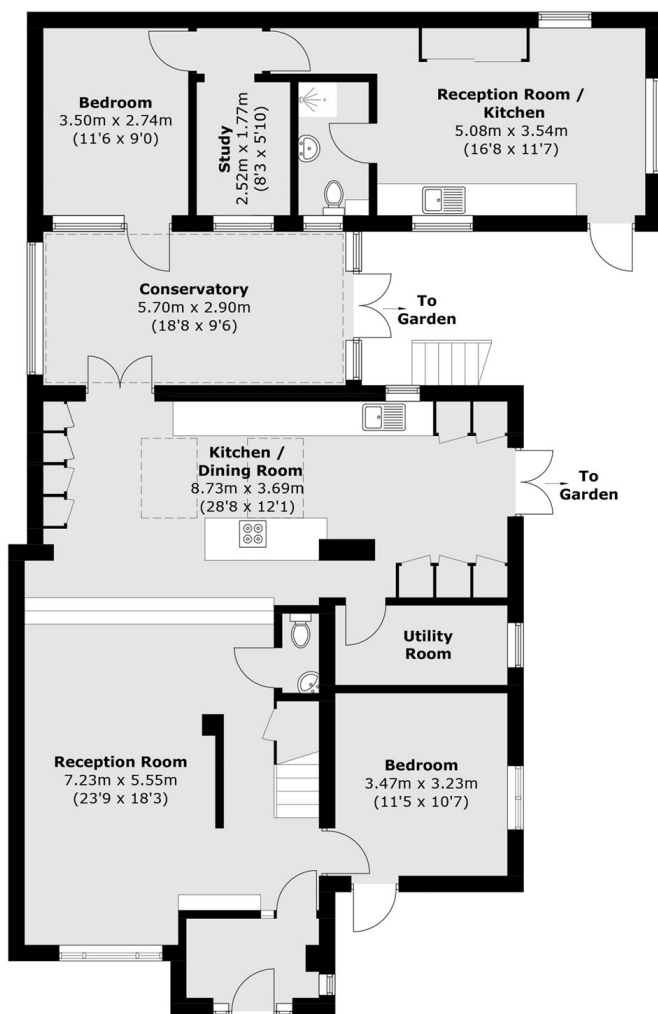
Offered to the market with no onward chain is this impressively large semi detached house measuring more than 2,300 square feet of generous living space (including a self-contained annex). Arranged over three floors, there are six bedrooms, three bathrooms and three reception rooms. We love the generous roof terrace measuring 340 square feet in addition to a delightful patio garden.

Lynton Close is a quiet cul-de-sac on the borders of Twickenham and St Margarets and is in close proximity to Twickenham town centre and its bustling High Street

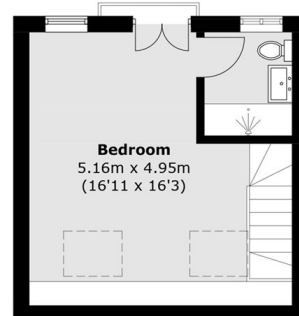
### Features

- Semi Detached House
- Six Bedrooms / Three Baths
- Over 2,300 Square Feet
- Solar Panels
- Roof Terrace & Garden
- No Chain

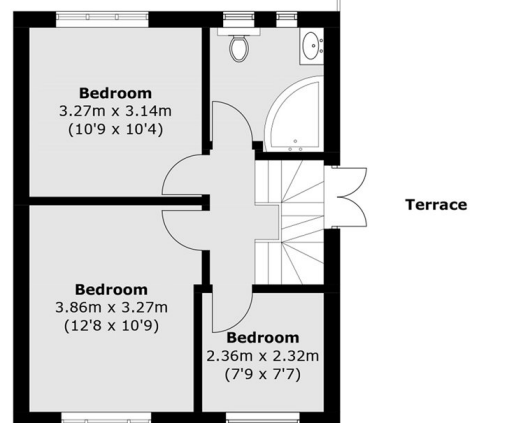
# Lynton Close, Isleworth, TW7



**Ground Floor**



**Second Floor**



**First Floor**

Total area (approx.): 217.0 sq. m (2,335.7 sq. ft)  
(Including Annex)

Terrace (approx.): 31.6 sq. m (340.1 sq. ft)