



Sussex Avenue, TW7

£2,500 Per calendar month

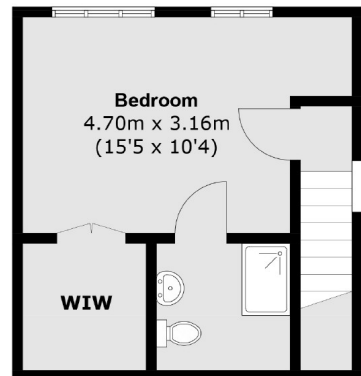
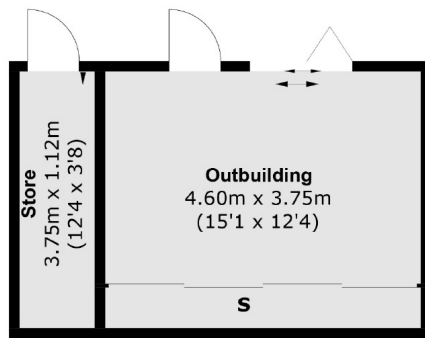
A simply stunning four bedroom end of terrace family home, beautifully presented throughout. There is an extension on the ground floor with bi-fold doors leading into the garden which has a large outbuilding. The loft has been converted which has an en-suite and spacious walk-in

Sussex Avenue is a quiet residential road superbly situated in the Woodlands area with convenient access to local schools, parks and transport links.

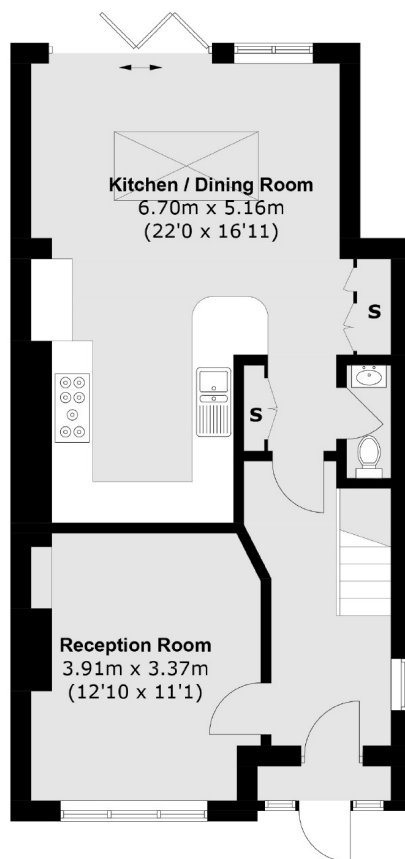
Features

- End Of Terrace
- Four Bedrooms
- Large Open Kitchen Diner
- En-suite Master Bedroom
- Walk In Wardrobe
- Large Garden Studio

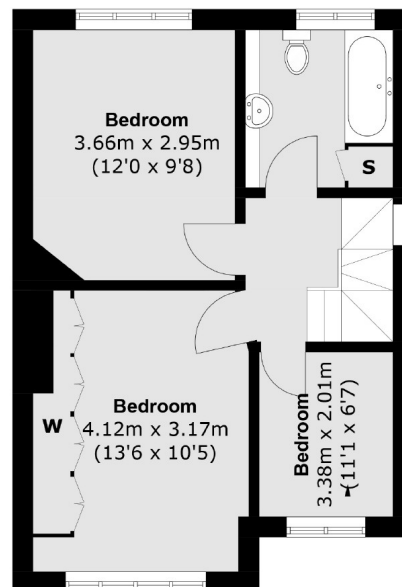
Sussex Avenue, Isleworth, TW7



Second Floor



Ground Floor



First Floor

Total area (approx.): 140.9 sq. m (1,516.0 sq. ft)
(Including Outbuilding)

Contact

To arrange a viewing call our office on the number below or visit our website.



Energy Rating: . We aim to make our particulars both accurate and reliable. However they are not guaranteed; nor do they form part of an offer or contract. If you require clarification on any points then please contact us, especially if you're traveling some distance to view. Please note that appliances and heating systems have not been tested and therefore no warranties can be given as to their good working order.