



St. Stephens Road, TW3

£600,000

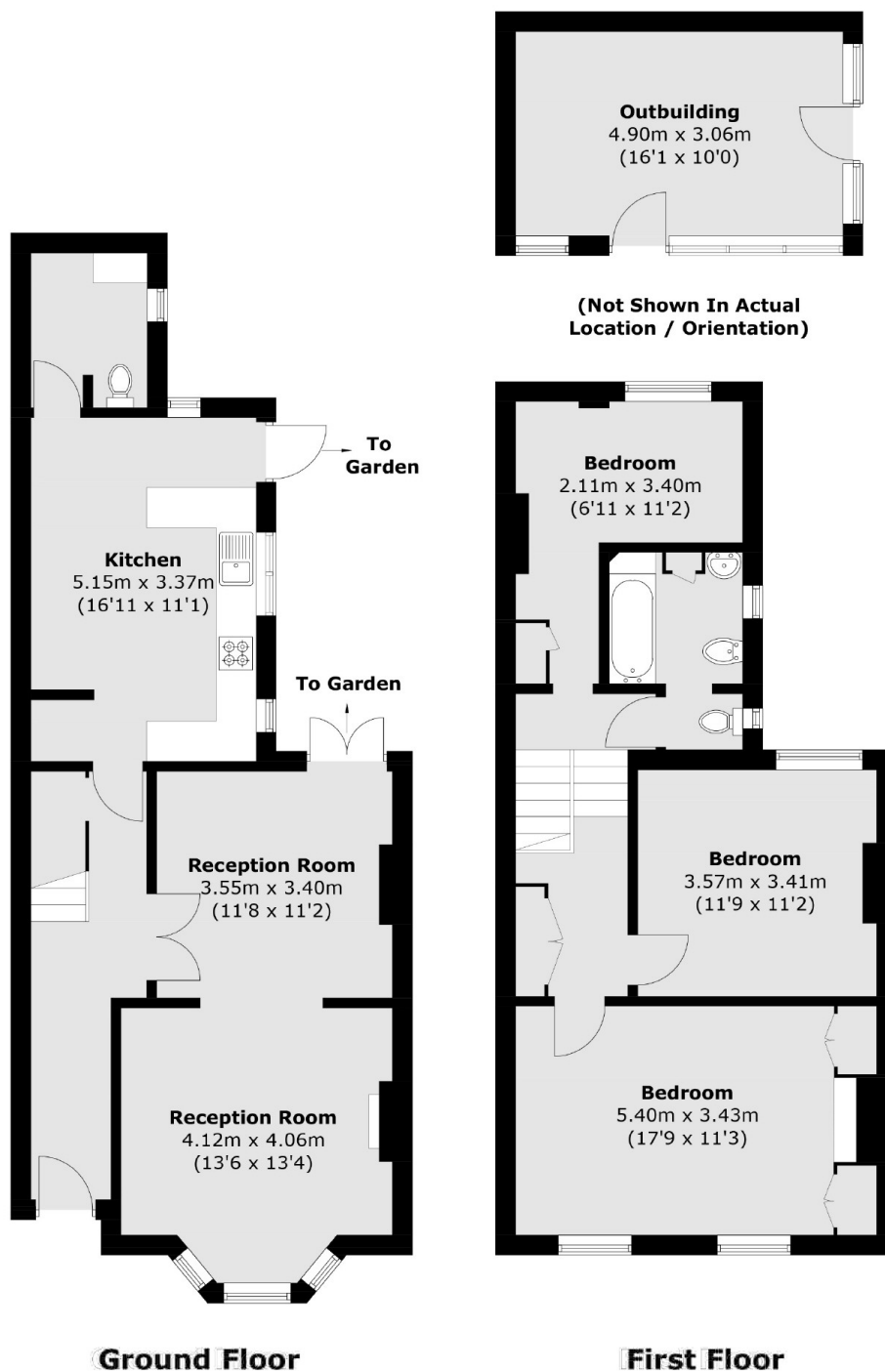
We are delighted to bring to the market this beautiful and characterful three bedroom semi detached Victorian house located on the popular and sought St. Stephens Road. Offering more than 1,250 square feet of generous internal living space, further benefits include a fantastic outbuilding/office space measuring 165 square feet. As you enter the welcoming hallway, you're greeted by high ceilings and period features which continue throughout this magical house. The front reception room simply wows with a stunning bay-fronted window and high ceiling cornice. To the rear of the house, there is a generous kitchen, downstairs WC and utility room. We love the mature, secluded garden with generous outbuilding. Upstairs is home to three well proportioned bedrooms and a family bathroom. Further benefits include a driveway and additional scope to extend (STPP)

Situated in a conservation area on a sought after and premier tree lined road, close to excellent local schools, park and transport links. Neighbouring areas of Whitton, Twickenham and Isleworth are all within easy reach.

Features

Victorian Semi Detached
Three Bedrooms
One Bathroom & Guest WC
Driveway
Garden & Outbuilding
Sought After Road

St. Stephens Road, Hounslow, TW3



Total area (approx.): 117.2 sq. m (1,261.4 sq. ft)
Outbuilding: 15.3 sq. m (164.6 sq. ft)

Dexters

Isleworth
568 London Road
Isleworth
TW7 4EP
Sales
020 8560 1177

Energy Rating: D. We aim to make our particulars both accurate and reliable. However they are not guaranteed; nor do they form part of an offer or contract. If you require clarification on any points then please contact us, especially if you're traveling some distance to view. Please note that appliances and heating systems have not been tested and therefore no warranties can be given as to their good working order.

 **RICS** | Regulated
Estate Agent
and Letting Agent

dexters.co.uk