



Frazer Nash Close, TW7

£2,250 Per calendar month

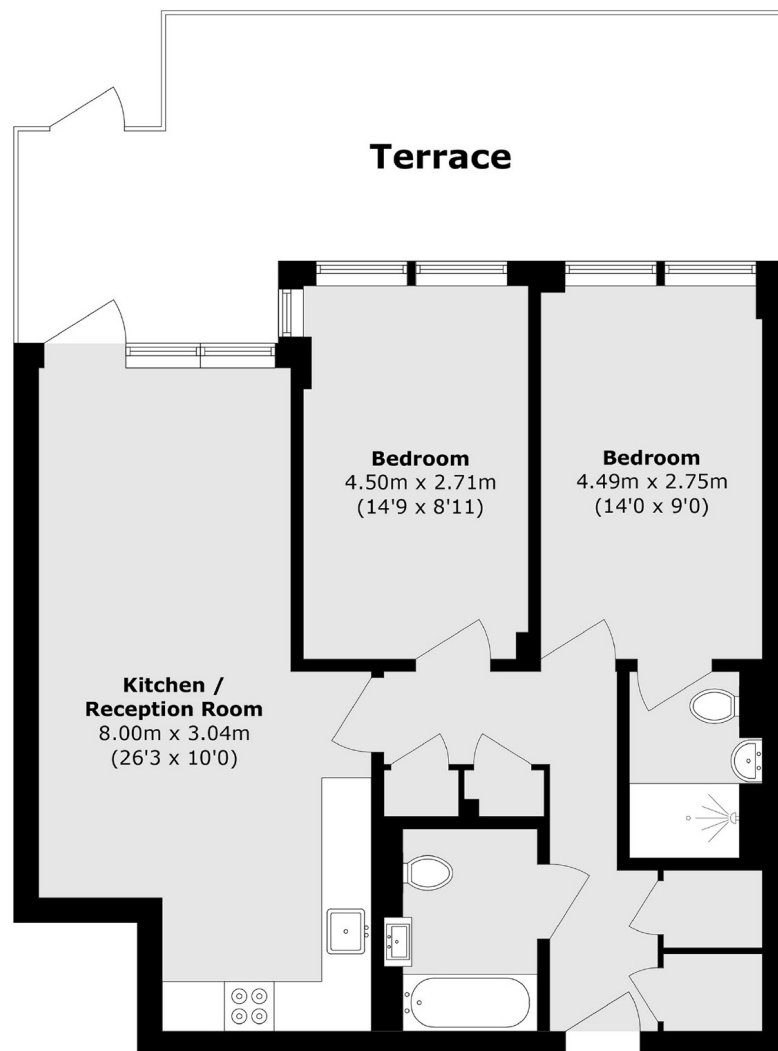
A simply exceptional and exquisite two double bedroom apartment offering luxury living. The property has the added benefits of a private terrace, two large double bedrooms, two bathrooms and off street parking.

This property is in the heart of Isleworth and is easy accessible to Isleworth BR mainline station as well as St. Johns Gardens is around the corner from the property.

Features

- Two Double Bedrooms
- Two Bathrooms
- Off Street Parking
- Underfloor Heating
- Private Terrace
- Great Transport Links

Frazer Nash Close, Isleworth, TW7



Total area (approx.): 72.8 sq. m (783.6 sq. ft)
Terrace area (approx.): 28.6 sq. m (307.9 sq. ft)

Dexters

Isleworth
568 London Road
Isleworth
TW7 4EP
Lettings
020 8560 1717

Energy Rating: B. We aim to make our particulars both accurate and reliable. However they are not guaranteed; nor do they form part of an offer or contract. If you require clarification on any points then please contact us, especially if you're traveling some distance to view. Please note that appliances and heating systems have not been tested and therefore no warranties can be given as to their good working order.

 **RICS** | Regulated
Estate Agent
and Letting Agent

[dexters.co.uk](https://www.dexters.co.uk)