



Prince Regent Road, TW3

£325,000

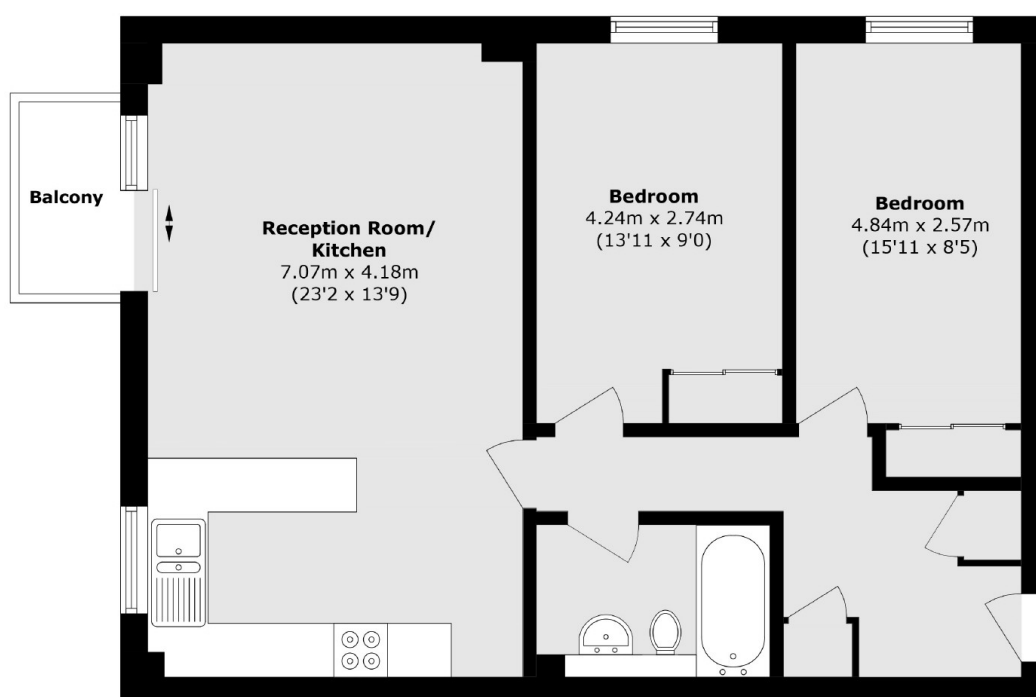
A two double bed apartment is located in a popular development moments away from Hounslow High Street. The property benefits from a private balcony with fantastic views, lift service and no onward chain.

Prince Regent Road is located in the heart of Hounslow offering easy access to the town centre for a wide selection of shops, bars and restaurants and close to Hounslow Central Station.

Features

- No Onward Chain
- Balcony
- Centrally Located
- Large Apartment
- Good Transport Links
- Two Double Bedrooms

Prince Regent Road, Hounslow, TW3



Total area (approx.): 68.7 sq. m (739.4 sq. ft)

Total area (approx.): 2.4 sq. m (25.8 sq. ft)