



Dominion Close, TW3

£319,950

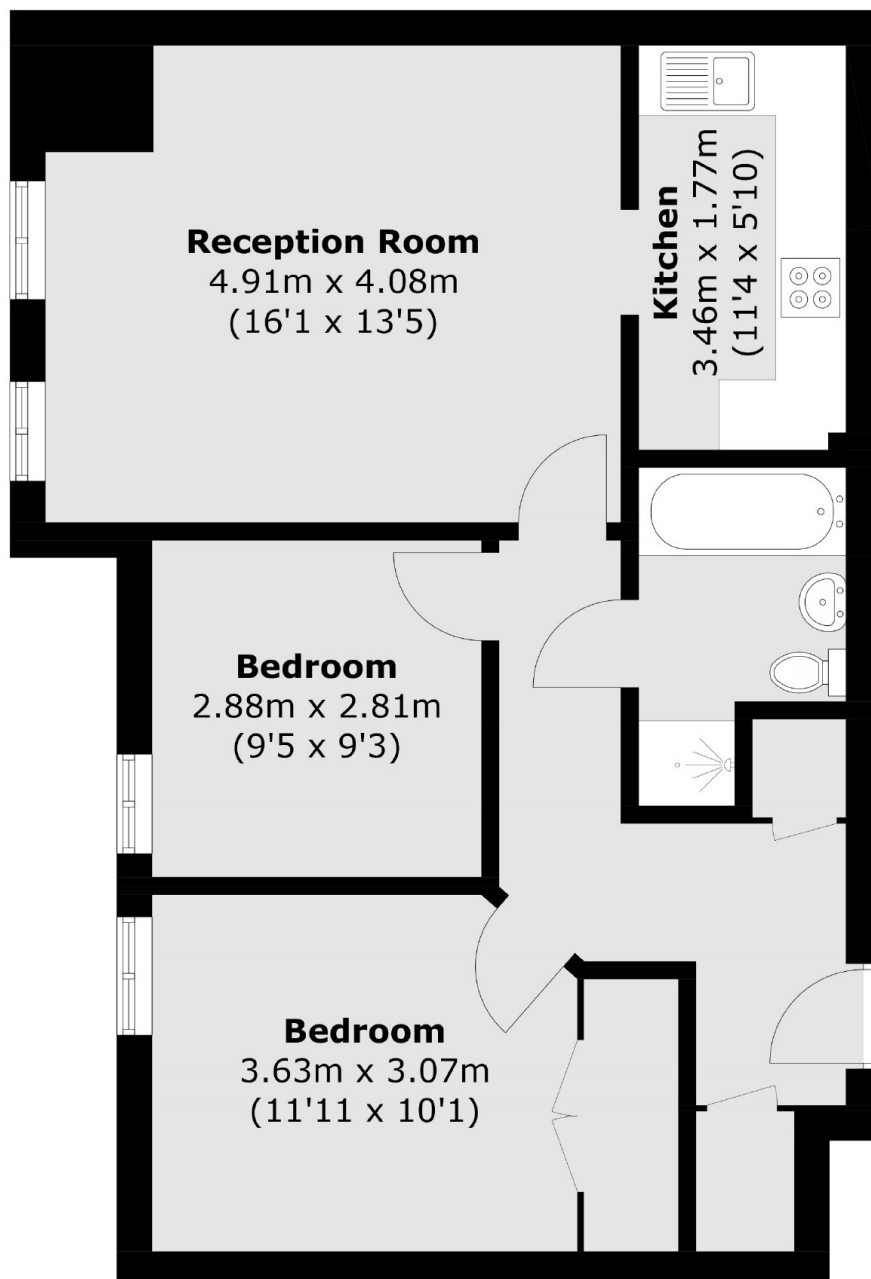
Offered to the market with no onward chain is this delightful first floor apartment located in a popular and centrally located development. Offering almost 700 square feet of generous living space, this two double bedroom apartment further benefits from a spacious reception/kitchen, family bathroom with tub and shower, long lease and allocated parking space.

Dominion Close is a popular and sought after development superbly situated in the centre of town. With links to and from Central London via a short walk to Hounslow East Station (Piccadilly Line) this is the perfect opportunity for first time buyers and investors alike.

Features

- No Chain
- Two Double Bedrooms
- Allocated Parking
- Long Lease
- Gated Development
- Communal Gardens

Dominion Close, Hounslow, TW3



Total area (approx.): 64.3 sq. m (692.1 sq. ft)