



Frazer Nash Close, TW7

£330,000

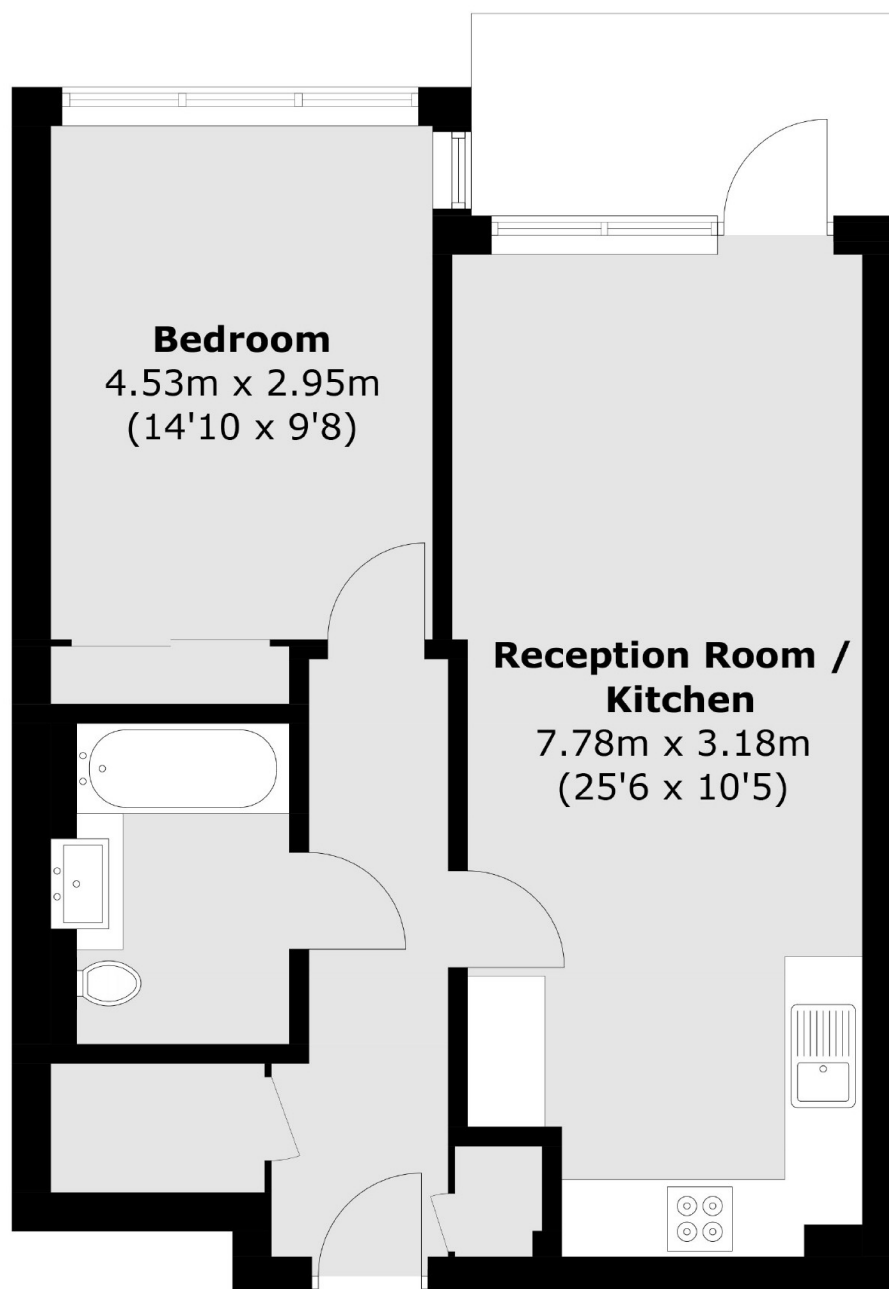
A simply stunning and larger than average one double bedroom ground floor apartment located in a popular and sought after development. We love the pretty patio/garden area which opens up from a delightful open-plan kitchen/dining/reception area. Further benefits include integrated appliances and a long lease.

Frazer Nash Close is a sought after development situated moments from Isleworth train station with regular links to London Waterloo. The property is close to local shops, parks and restaurants. There is also easy access to neighbouring areas of Kew, Richmond and Twickenham.

Features

- Ground Floor Apartment
- One Double Bedroom
- Long Lease
- Sought After Development
- Immaculate Condition
- Pretty Patio Garden

Frazer Nash Close, Isleworth, TW7



Total area (approx.): 51.3 sq. m (552.2 sq. ft)

Dexters

Isleworth
568 London Road
Isleworth
TW7 4EP
Sales
020 8560 1177

Energy Rating: B. We aim to make our particulars both accurate and reliable. However they are not guaranteed; nor do they form part of an offer or contract. If you require clarification on any points then please contact us, especially if you're traveling some distance to view. Please note that appliances and heating systems have not been tested and therefore no warranties can be given as to their good working order.

 **RICS** | Regulated
Estate Agent
and Letting Agent

[dexters.co.uk](https://www.dexters.co.uk)