



Lanadron Close, TW7

£329,950

Offered to the market with no chain, this spacious two double bedroom apartment is located in a popular residential development. Positioned on the second floor and spanning 760 square feet of generous living space, this apartment benefits from a large open-plan kitchen/reception room, two good size bedrooms, family bathroom and storage cupboards. Further benefits include a long lease.

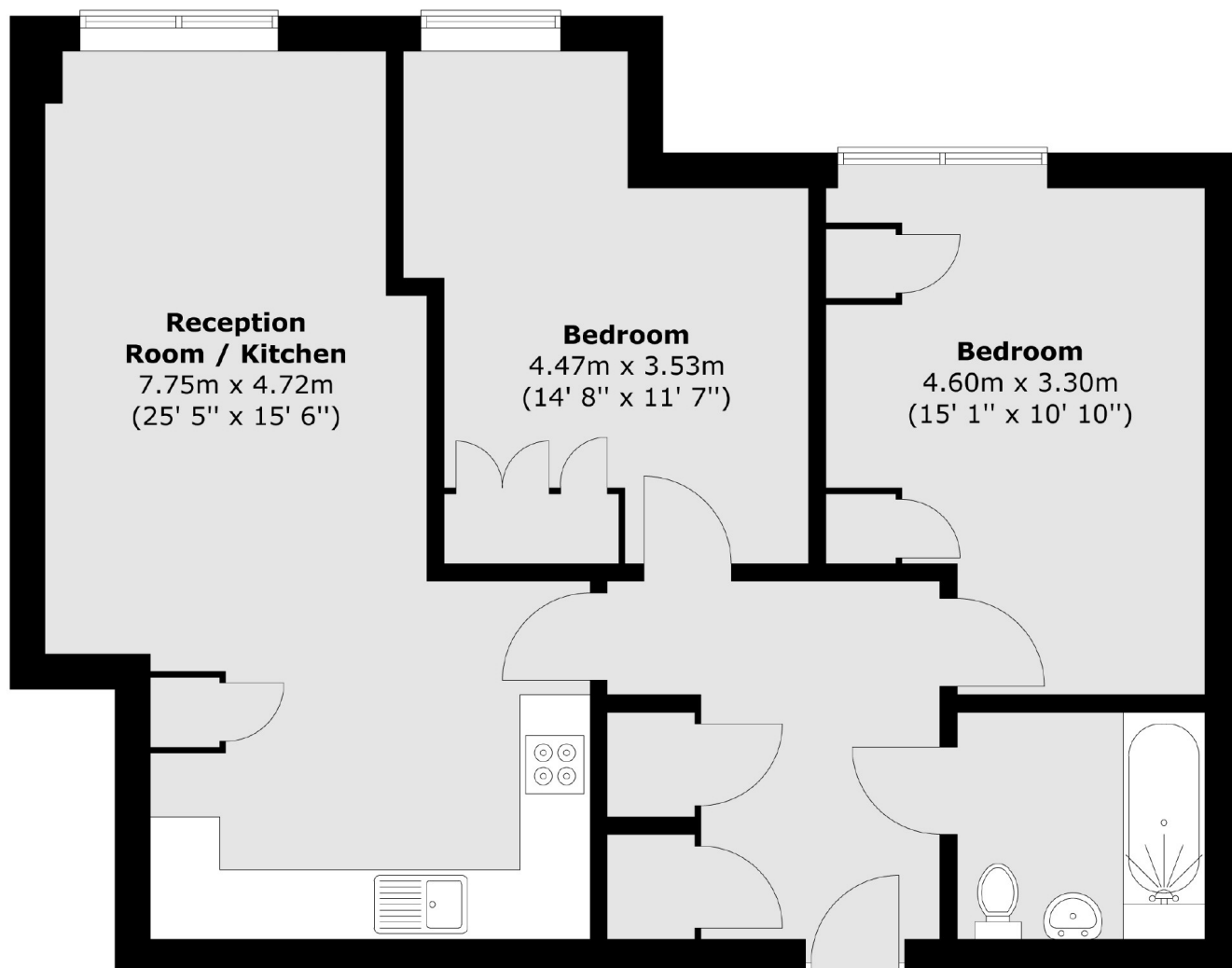
Langtry Court is a popular and sought after development situated in the heart of Isleworth offering easy access to Isleworth BR mainline station, whilst the shops and amenities of Isleworth, St. Margarets and Richmond are within easy reach.

Features

- Second Floor Apartment
- Two Double Bedrooms
- Long Lease
- Residents Parking Available
- No Chain
- Sought After Location

Lanadron Close, Isleworth, TW7

Second Floor



Total area (approx.) : 70.6 sq. m (760 sq. ft)

Dexters

Isleworth
568 London Road
Isleworth
TW7 4EP
Sales
020 8560 1177

Energy Rating: C. We aim to make our particulars both accurate and reliable. However they are not guaranteed; nor do they form part of an offer or contract. If you require clarification on any points then please contact us, especially if you're traveling some distance to view. Please note that appliances and heating systems have not been tested and therefore no warranties can be given as to their good working order.

 **RICS** | Regulated
Estate Agent
and Letting Agent

[dexters.co.uk](https://www.dexters.co.uk)