



Stags Way, TW7

£349,950

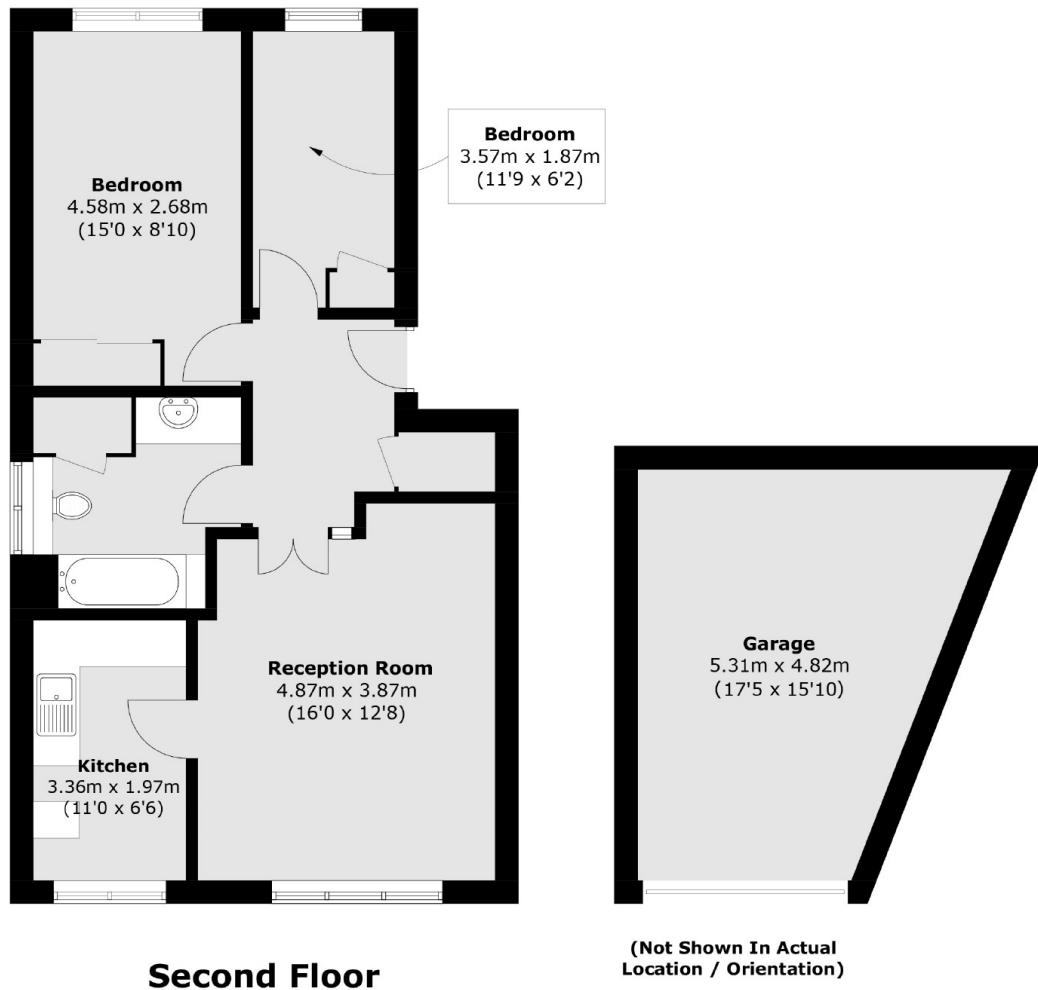
Offered to the market with no onward chain is this delightful top/second floor apartment. Comprising of two bedrooms, separate kitchen, lounge and family bathroom. Further benefits include a long lease, garage and parking for residents.

Situated within a quiet residential development, close to excellent schools, Osterley tube station (Piccadilly line) and local amenities. There is easy access in and out of London via the A4/M4. Isleworth overground train station is located nearby with excellent and frequent train services into London Waterloo.

Features

- Top Floor Apartment
- Two Bedrooms
- Reception Room
- Residents Parking
- Garage
- No Chain

Stags Way, Isleworth, TW7



Total area (approx.): 58.8 sq. m (632.9 sq. ft)
Garage : 20.1 sq. m (216.3 sq. ft)